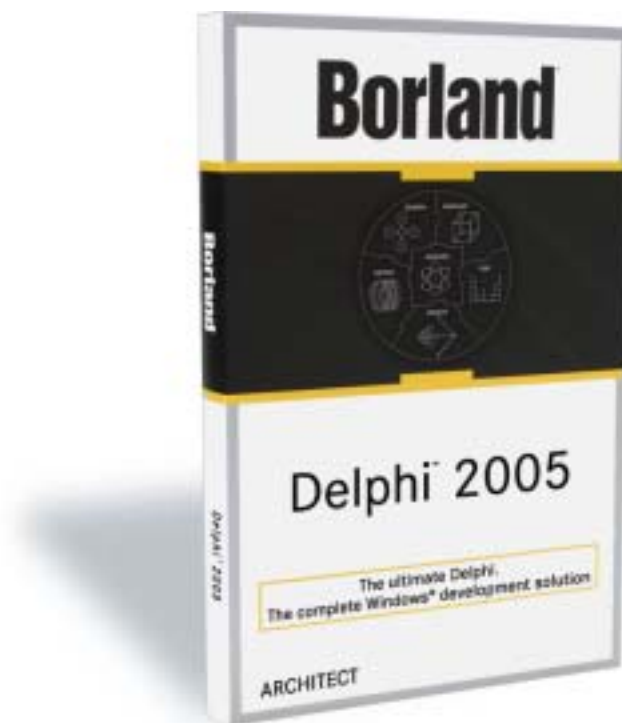


# Borland®

Delphi 2005 가

---



## Contents

.....	8
Delphi.....	8
(IDE).....	13
IDE, .....	13
IDE, .....	15
Structure Pane .....	16
VCL / VCL.NET .....	18
Tool Palette .....	19
Tool Palette .....	20
VCL.NET .....	22
Object Inspector .....	23
Upgrade Project .....	24
Delphi 2005 .....	25
(Find in Files) .....	27
International Characters .....	28
Message List .....	28
IDE .....	28
Visual Studio .NET      IMPORT/EXPORT.....	30
.....	33
.....	33
.....	33
Variable    Field .....	35
.....	36
.....	37
Namespace (C#)    Unit (Delphi) .....	38
SyncEdit.....	39
Error Insight.....	41
Help Insight.....	43

.....	44
Content .....	45
Info .....	46
Diff Pane .....	47
Code Navigation .....	48
.....	49
.....	49
J2EE / CORBA .NET – Janeva .....	50
.....	51
≡ .....	52
VCL.NET .....	53
가 .....	53
(Partially Trusted Callers) .....	56
Delphi .....	58
Win32 .NET Delphi .....	58
For...In .....	58
UTF8 .....	59
.NET Delphi .....	59
Delphi Namespaces .....	60
.NET VCL .....	61
) (Forward Declared 0 .....	62
Delphi Win32 .....	62
Funtion Inine .....	63
Nested Type .....	64
Nested Type .....	65
4 SSE3 SSE2 Op .....	65
XML .....	65
Delphi .....	68
.....	68
Exception Dialog Enhancements( ) .....	69
.....	71
Breakpoints(Breakpoint) .....	73
The Log Call Stack Breakpoint Option( Breakpoint ) .....	73

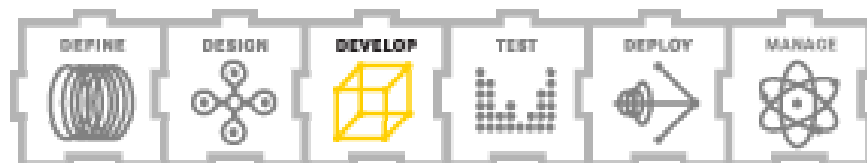
Breakpoint Dialog Box (Breakpoint ) .....	75
.....	76
Win32 Evaluator .....	76
.....	79
ADO.NET RAD .....	79
DataSync DataHub , .....	80
RemoteServer RemoteConnection (remoting) .....	83
ADO.NET Borland Data Provider .....	85
BDP Data Explorer .....	86
.....	87
.....	88
Stored Procedure .....	89
Delphi2005 .....	90
.NET VCL .....	90
ADO.NET .....	91
/ .....	94
Deployment Manager( ) .....	94
Web Forms Designer HTML .....	97
.....	99
.....	100
Tag .....	100
ASP.NET Project Manager 가 .....	101
DB .....	102
DB .....	102
DB .....	103
IntraWeb .....	103
.....	107
ADO.NET RAD .....	107
DataSync DataHub , .....	108
RemoteServer RemoteConnection (remoting) .....	111
ADO.NET Borland Data Provider .....	113
BDP Data Explorer .....	114

.....	115
.....	116
Stored Procedure .....	117
Delphi2005 .....	118
.NET VCL .....	118
ADO.NET .....	119
/ .....	122
Deployment Manager( ) .....	122
Web Forms Designer HTML .....	125
.....	127
.....	128
Tag .....	128
ASP.NET Project Manager 가 .....	129
DB .....	130
DB .....	130
DB .....	131
IntraWeb .....	131
Integrated Application Lifecycle Management .....	135
Delphi 2005 StarTeam .....	135
Unit Testing .....	139
Enterprise Core Objects II .....	142
Rapid MDA.....	142
ECO Space Persistence .....	145
ECO OCL.....	146
ECO II .....	146
A Highly Scalable Enterprise Object Cache .....	146
Object .....	147
ECO II Web Forms / Web Services .....	147
ECO II .....	148
3 <sup>rd</sup> .....	151
Borland InterBase 7.5 .....	151

---

Borland Janeva.....	152
Microsoft .NET Framework      Borland Optimizeit™ Profiler .....	152
Borland StarTeam 6.0 Standard Edition .....	152
Borland Delphi 2005      Component One Studio Enterprise .....	153
Crystal Reports Borland Edition .....	153
glyFX Borland Special Edition .....	154
IBM DB2 Universal Developers Edition .....	154
InstallShield Express for Borland Delphi.....	154
Internet Direct (Indy) .....	154
IntraWeb .....	155
Microsoft SQL Server 2000 Desktop Engine (MSDE 2000).....	155
Microsoft SQL Server 2000 Developer Edition.....	155
Rave Reports Borland Edition .....	156
Wise Owl Demeanor .NET Borland Edition.....	156
.....	156
Summary .....	157
Borland Software Corporation .....	157
가 .....	157

# Borland® Delphi™ 2005



Delphi 2005 Reviewer's Guide

가 , 20

Delphi 2005

Delphi 2005 Reviewer's Guide

Borland Delphi 2005

Delphi 2005

. Delphi 2005

가

가

가

. 1995

가

Delphi 2005

Delphi

Delphi

가

1983

(IDE),

(syntax)-

(OOP)

, OWL,

Object Windows Library

(groundbreaking)

1995 2 Delphi 1.0

가

, Delphi

Microsoft .NET Framework.

(FCS)가



Delphi 2005 , 가  
 . Delphi 2005  
 (GUI), Web, database,  
 (model-driven application development) C#, Microsoft .NET Framework  
 Win32 .  
 (ALM) RAD(Rapid application  
 development) . Delphi 2005  
 , 가 .

- : The Delphi 2005 IDE  
 Microsoft .NET Framework Win32  
 , , .  
 , 가 Delphi 2005,  
 .
- : Delphi 2005  
 Delphi .  
 , 가  
 가 Delphi  
 2005 가 .
- : Delphi 2005  
 . 가 Delphi  
 2005  
 StarTeam , .NET Borland Enterprise Core  
 Objects II (ECO™ II),  
 for the Microsoft .NET Framework Borland Optimiziteit Profiler

Delphi 2005

**Borland Products = Technical Excellence**

, Borland

Delphi 2005

- Microsoft .NET Framework    Borland Delphi 8    2004    7    2    TechEd Europe  
Best of Show
- Borland C#Builder    2004    5    24    the Visual Studio Magazine  
Reader Choice Award
- Borland Delphi 7 Studio    2004    2    25    Web Services    Best GUI    Web  
Services Journal Readers' Choice Award







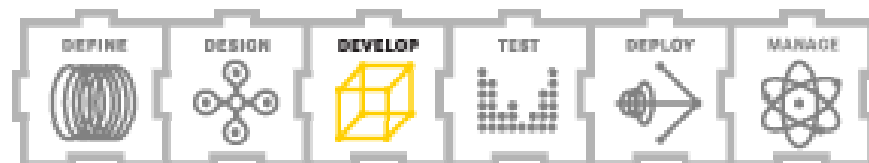
가

Delphi 2005

:

reviewer's guide Delphi 2005 pre-release

# Borland® Delphi™ 2005



(IDE)

Delphi 2005 IDE (integrated development environment)

. Borland Galileo IDE Borland C#Builder Delphi 8 for .NET  
, Delhi 2005 IDE



, , , IDE

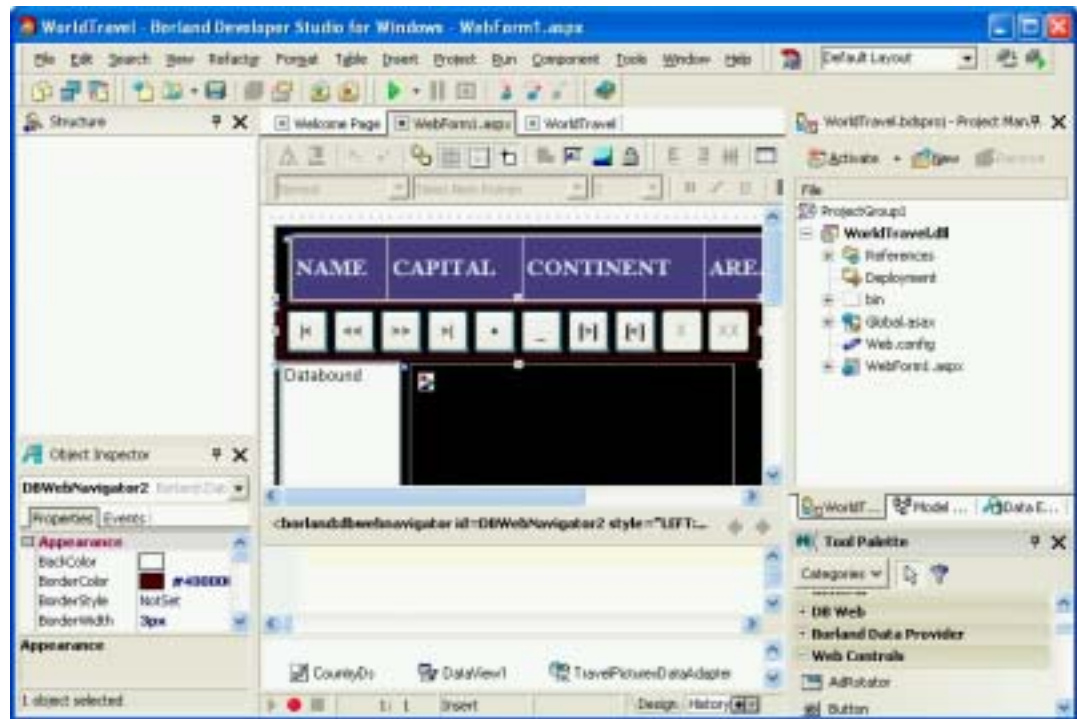
IDE,

Delphi C# , Win32 .NET  
, ASP.NET  
. Delphi 2005 IDE

Delphi 2005 IDE 가

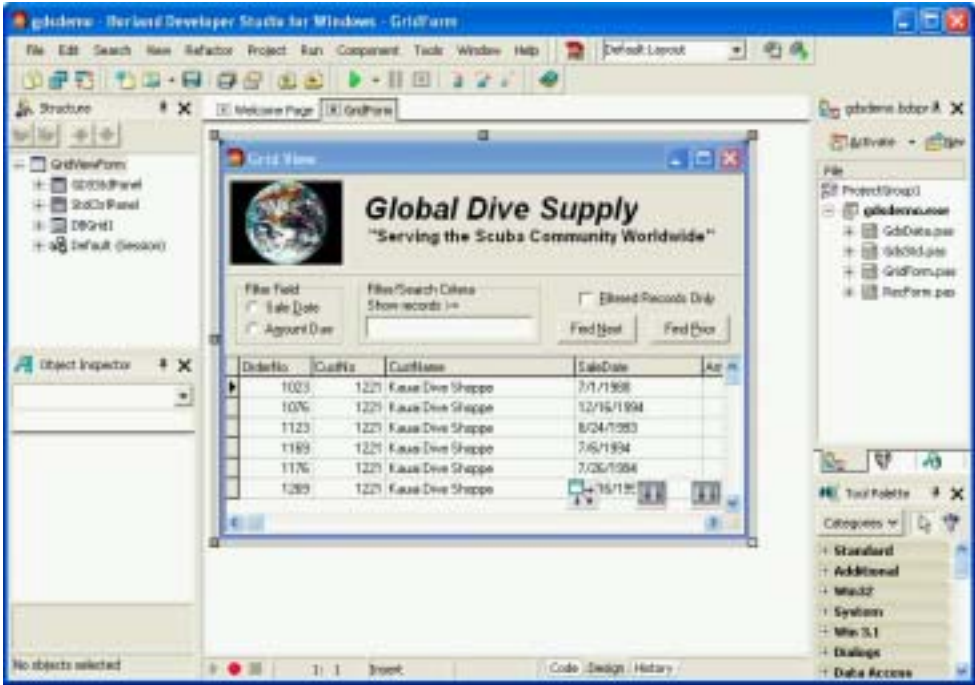
가 ASP.NET

, HTML



가 Win32

, VCL (visual component library)



가

. 가 ,  
가 가 ,

ASP.NET

Win32 VCL , Delphi  
2005 가

IDE,

Delphi 2005 (context-sensitive) . Delphi  
2005 . Delphi 2005

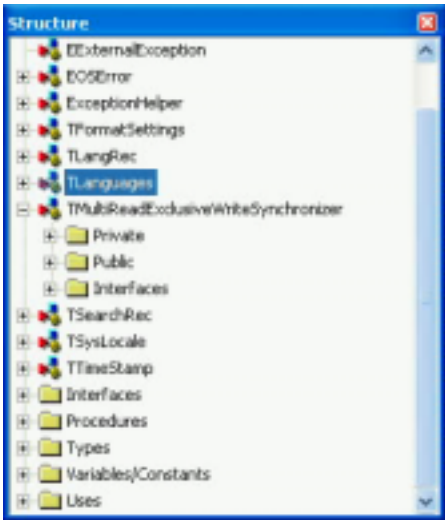
Win32 Delphi, Microsoft .NET Framework Delphi,  
Microsoft .NET Framework C# .

IDE , Delphi 2005 . 가 C# ASP.NET , Delphi for .NET Web Control class library, Delphi Win32 Windows DLL (dynamic link library) 가 , Tool Palette (snippets) . Delphi 2005 가 가 . .NET VB 가 , Delphi 2005 IDE .NET VB , , , .

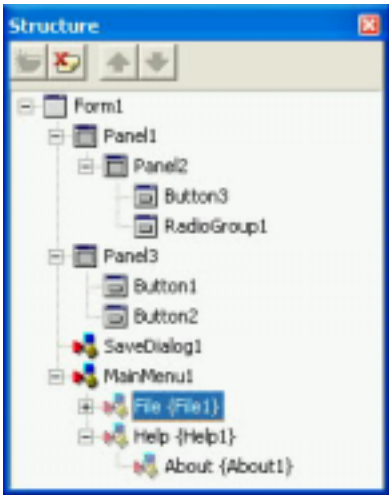
Structure Pane

Structure Pane (context-sensitive) . 가 , Structure Pane , , , . (Delphi 7 ‘ (code explorer’ .)





, 가 VCL 가  
Structure Pane  
(Delphi 7 Object Tree View .)

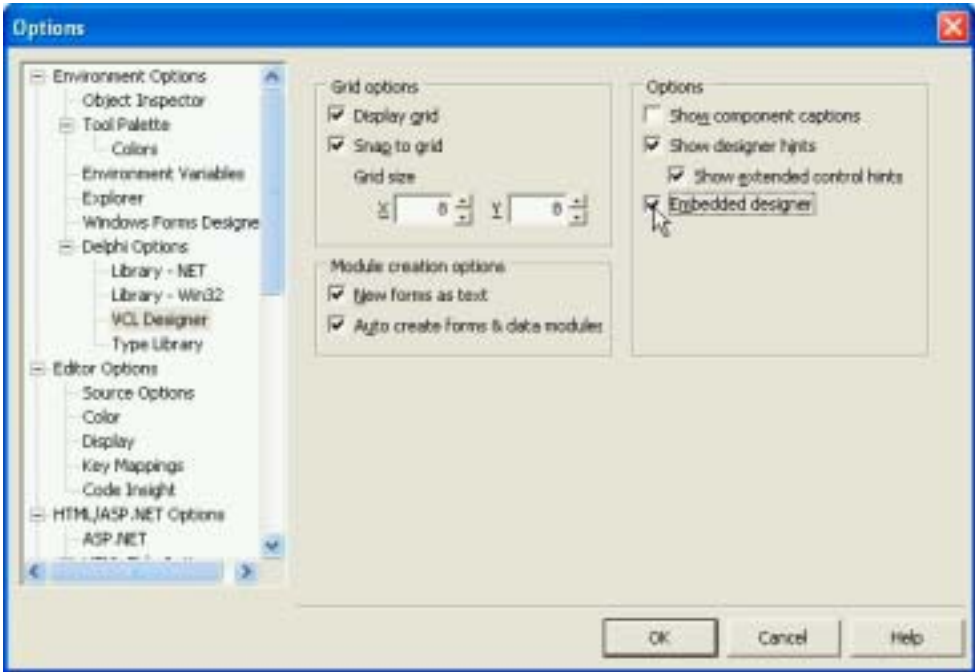


Structure Pane  
.  
가  
Structure Pane

. 가 VCL ,  
.  
Structure Pane 가 . Delphi 2005  
(Error Insight) , 가  
“ ”  
.

VCL / VCL.NET

Microsoft .NET Framework Delphi 8 Delphi 7  
VCL " floating " . Borland  
Delphi2005 . . VCL VCL.NET VCL Delphi  
, Delphi 2005 가 .NET  
..  
Delphi2005 , Tools|Options)  
VCL (VCL Designer) (Embedded designer)  
..



Tool Palette

Delphi 2005 , design-time

.  
(Object Inspector) . Delphi 2005

Tool Palette 가 .

Tool Palette 가 ,  
가 , (context sensitive) ,  
가 , 가 Tool Palette  
가 . Tool Palette

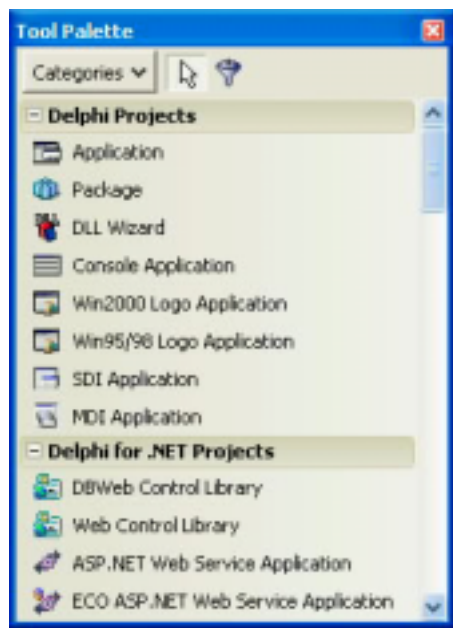
, Tool

Palette .  
.

Delphi 2005 Tool Palette

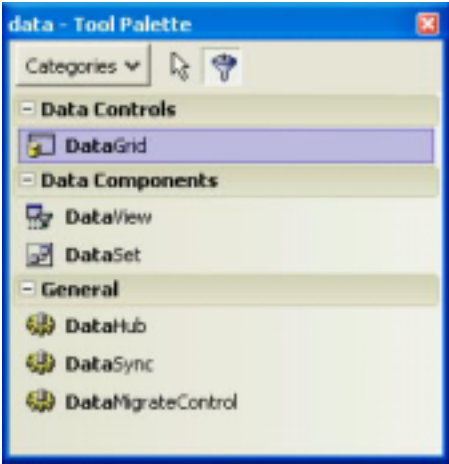
**Tool Palette**

Delphi 2005 Tool Palette Delphi  
. Design-time code snippet , 가  
Tool Palette  
Tool Palette 가

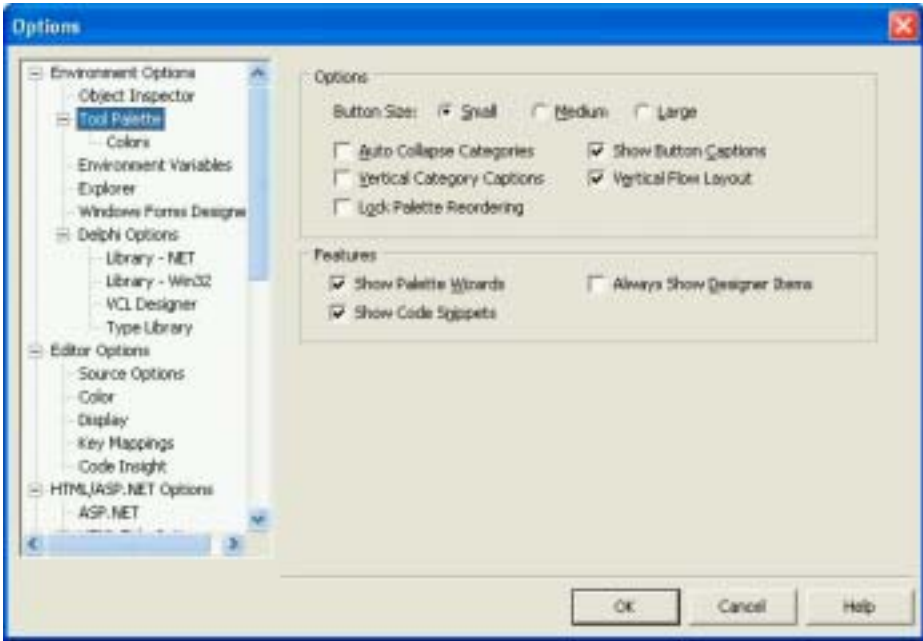


, Tool Palette

Tool Palette  
가 . Tool Palette (Filter Current  
Items) , Ctrl-Alt-P  
. Tool Palette (title bar)  
가  
.  
.



Tool Palette 가 .  
Tools| Options . Tool Palette configuration options  
Options dialog box Tool Palette .



, Delphi 2005 Tool Palette  
VCL  
가  
Delphi 2005

**VCL.NET**

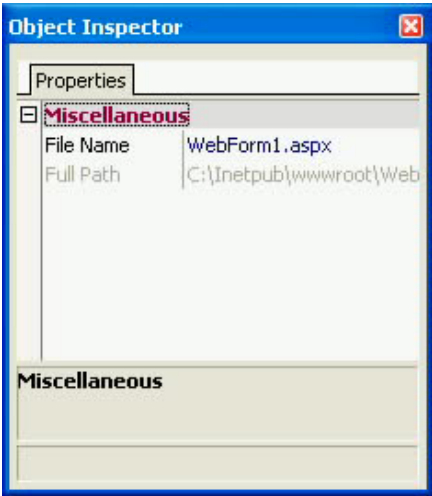
Delphi VCL Tool Palette 가  
(control) ,  
TButtonGroup, TCategoryButtons, TDockTabSet 가  
Win32 VCL for .NET , Delphi 2005 Tool  
Palette Structure Pane  
가  
Delphi 2005 IDE

VCL for .NET    Delphi VCL  
가 Win32  
.Net

Delphi 2005    Delphi 2005 help  
"What's New in Delphi 2005" ..

Object Inspector

Delphi 2005 Object Inspector  
, . Object Inspector  
(property) (event) ,  
ASP.NET .aspx  
Object Inspector



File Name property 가 , Object Inspector

File Name .

,

(unit) 가 .

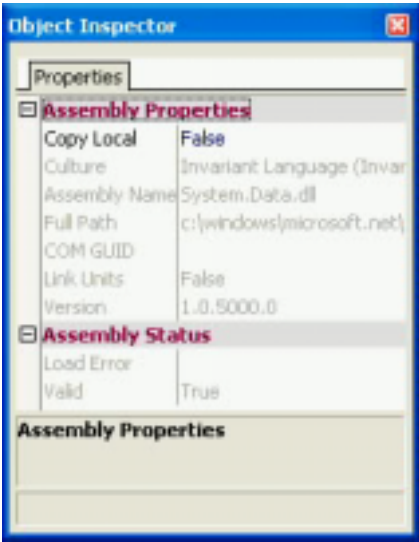
File | Save As .

Object Inspector .

.NET

, Object Inspector

.



Upgrade Project

Delphi2005 Delphi Win32 , .NET ,

Win32 Delphi7

Win32 . Win32

VCL.NET . VCL.NET 100% .NET

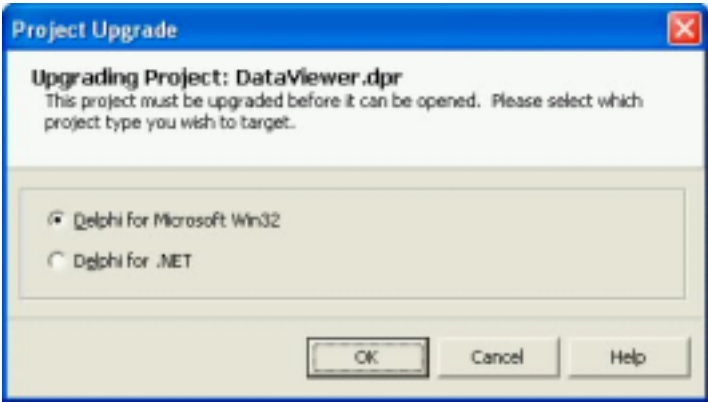


- Win32 .NET

Upgrade Project Win32 Delphi2005

Win32 .NET

가



Delphi2005

Win32 ,

.NET

\*.bdsproj . \*. Delphi2005

Project Upgrade 가

.NET Delphi2005 .NET

Delphi 2005

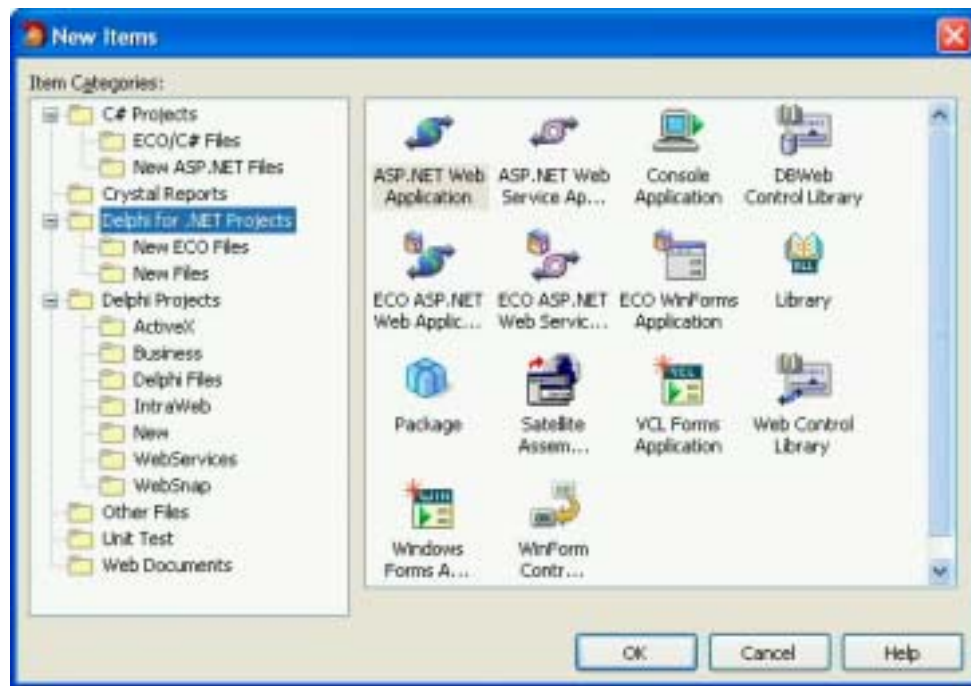
Delphi2005 , ,

the ASP.NET Web

Application Wizard web.config, global.asax, initial .aspx file

IIS 가

Delphi2005



Delphi

. Win32 Windows 2000 Logo Wizard, DLL Wizard, Automation Object Wizard, Web Service Wizard, IntraWeb Application Wizard, Database Form Wizard the Thread Wizard . Delphi2005

.NET and C# ASP.NET Web Application Wizard, Windows Form Application Wizard, ASP.NET Web Service Application Wizard, Web Control Library Wizard

(Find in Files)

**Find Text**

Find in Files: [dropdown]

Text to find: [input] [dropdown]

Options

☐ Case sensitive ☐ Whole words only

☐ Regular expressions

Where

☒ Search all files in project ☐ Search all files in project group

☐ Search all open files ☐ Search in directories

Search Directory Options

File mask: [input] [Cancel]

☐ Include subdirectories

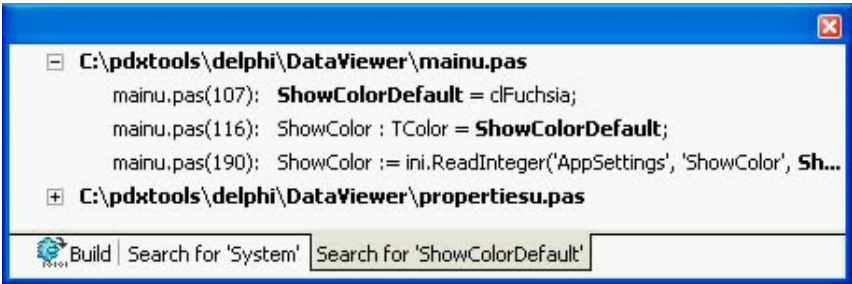
Output

☐ Display results in separate tab

☒ Group results by file

OK Cancel Help

가



## International Characters

Delphi 2005 IDE , , UTF-8 Characters

## Message List

Message List Delphi 2005 , .

Message List

..

## IDE

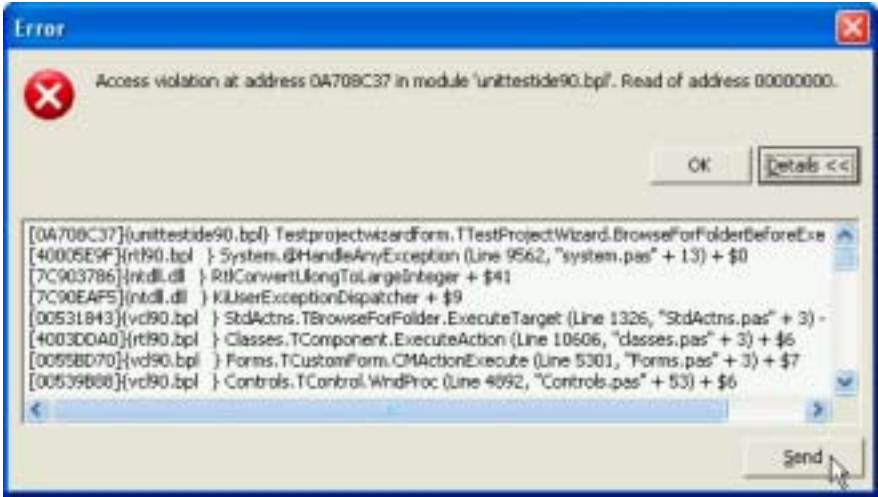
. 가

Quality Central (http://qc.borland.com) .

Delphi2005 IDE . IDE (Exception)

Delphi2005 .

Details .



Send

Send Report

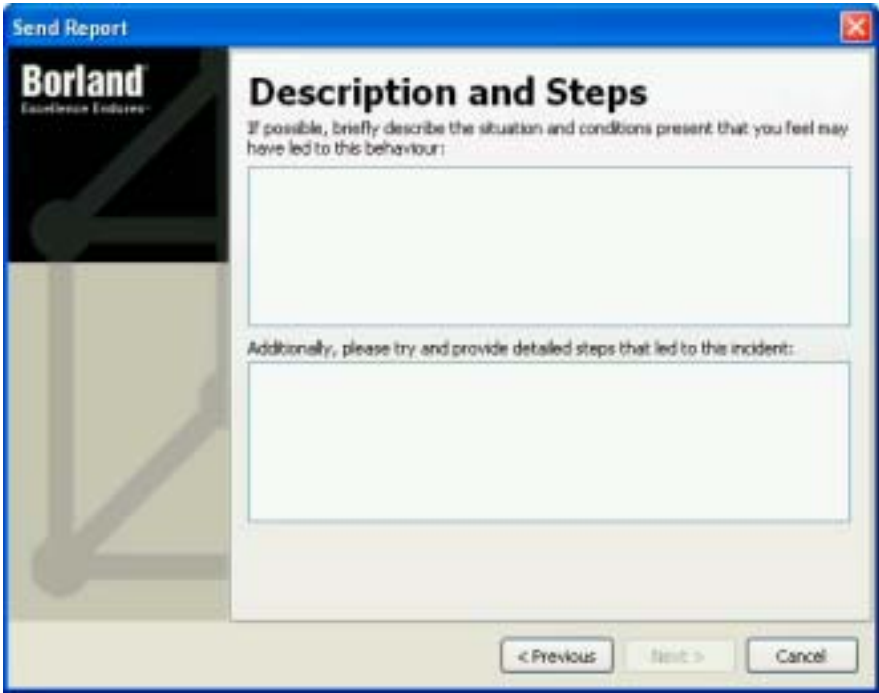


Next

가

Next

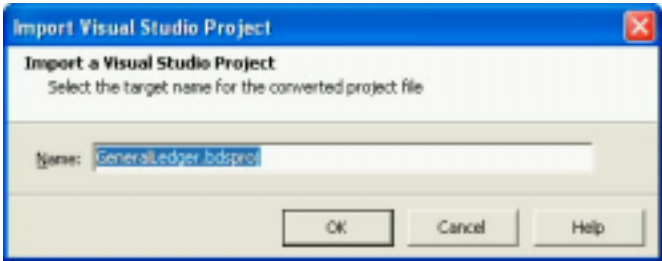
가



Next BDN(Borland Developer Network:<http://bdn.borland.com>)  
BDN  
Borland's Quality Central 가 Anonymous Report check  
box 가  
Next

Visual Studio .NET IMPORT/EXPORT  
Visual Studio .NET 2003 C# 가 Delphi2005  
Delphi2005 IMPORT  
Delphi2005 Visual Studio C# \*.csproj  
. Visual Studio IMPORT

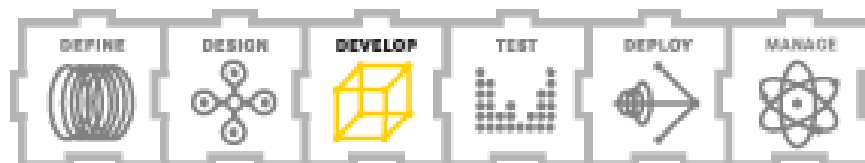
. Delphi2005 , , ,  
가 .  
Visual Studio .NET 2003 C# Delphi2005  
..



Delphi2005 .NET .  
Delphi2005 C# Visual Studio  
Delphi EXPORT . Delphi  
Tools | Export . 가 C#

# The Next Generation Code Editor

Borland®  
Delphi™ 2005







Delphi 2005

Delphi 2005

Delphi2005

Delphi C# 가 , Sync Edit, Error Insight,

Help Insight, 가

..

가 , ,

가 .

Function

Delphi 2005

, ,

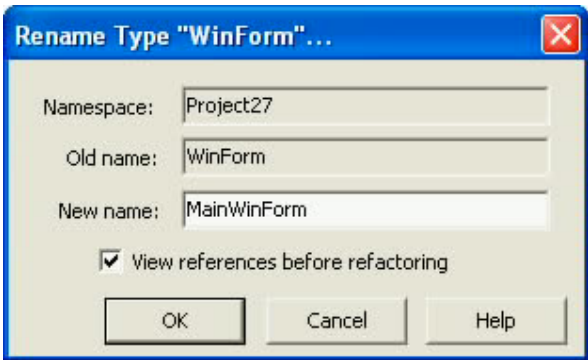
..

..

, , , Function, ,

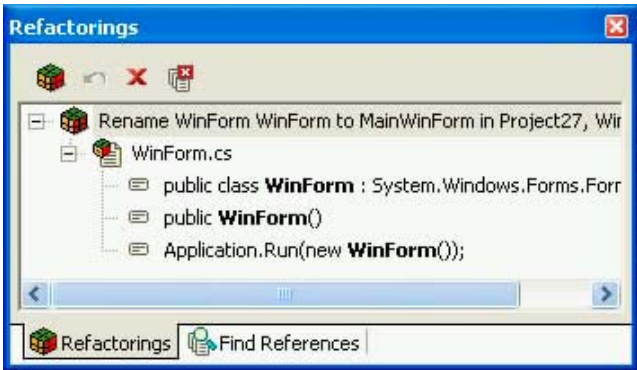
..

Refactor| Rename



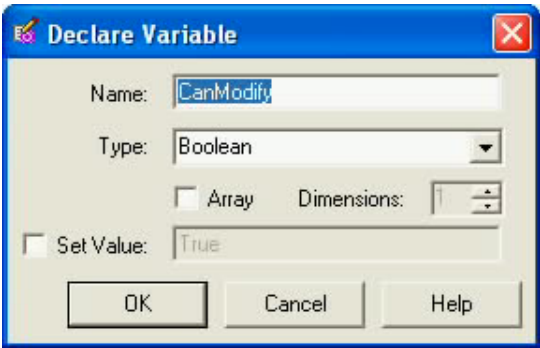
“View regerences vofore refactoring”

Delphi2005

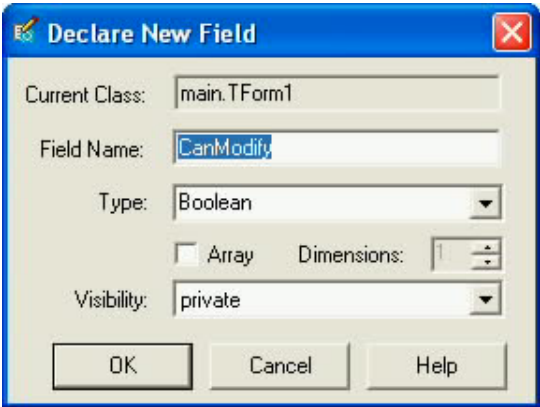


”Refactor”

Variable		Field	
“Declare Variable and Declare Field”			
Local Variable	Member field	가	Local
Variable	Member Field	.	Delphi
C#	.	(C#	C#
		). Delphi	Variable
	Member field	“type”	“var”
		.	.
Local Variable	Member field	가	,
	.	Refactor   Declare Variable or Refactor   Declare	
Field(	Ctrl-Shift-V	Ctrl-Shift-D	)
Variable		“Declare Variable”	. Declare



Declare Variable		Name	Type
.	Dimensions	.	Set
Value		.	Local Variable
OK		.	
Declare Field		Field	.
		.	.
Visibility	Class	가	. OK
	Class	Field 가	.



Delphi

resourcestring

. C# resourcestring .  
/ / 가

Delphi Refactor |  
Extract Resource String . Extract Resource String  
. OK  
Unit 가



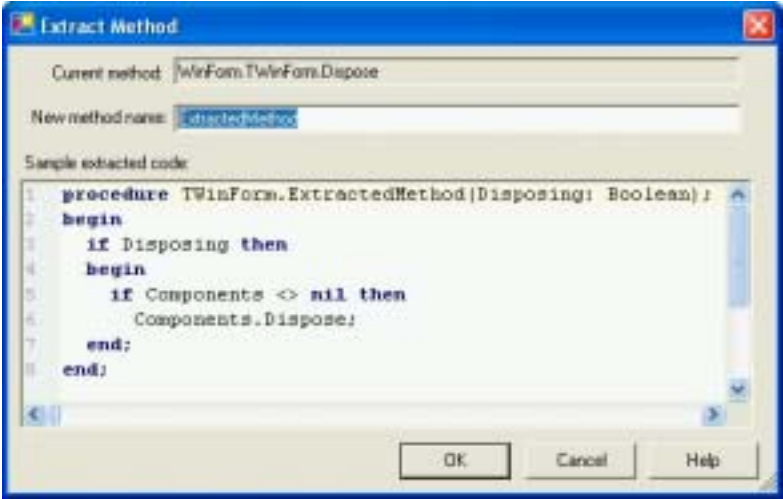
가

Delphi 2005 , Delphi

Refactor | Extract Method . Extract

Method

가



Delphi 2005 , ,

Passed-by-Value

Passed-by-Reference(var )

**Namespace (C#)      Unit (Delphi)**

, Refactor      Import

Namespace and Find Unit      Namespace

. C#      Refactor | Import Namespace      , Delphi

Refactor | Find Unit

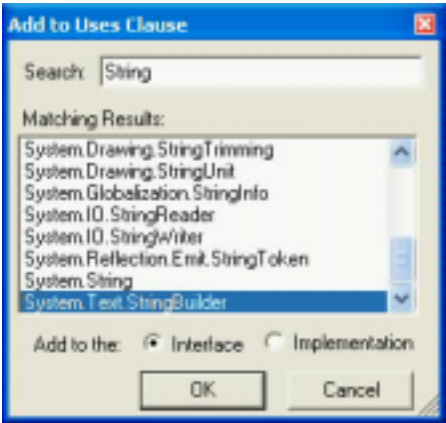
가      가

namespace

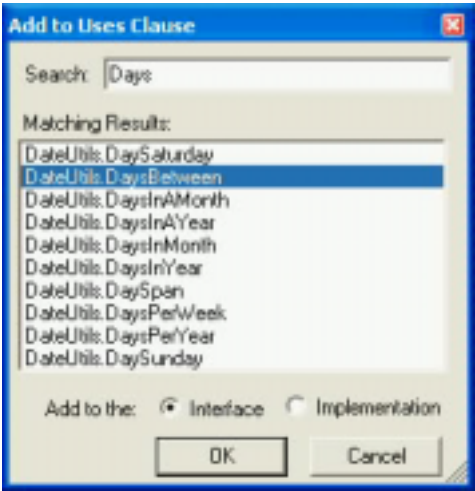
,      가 Delphi .NET Windows Forms      , FCL,

RTL.NET(.NET      Delphi      )

.NET      VCL      VCL.NET namespace



Delphi Win32 VCL RTL Unit  
.  
Search 가 ,  
가 namespace OK . Delphi  
, namespace interface implementation  
가 .



SyncEdit

SyncEdit Delphi2005 .  
, SyncEdit 가  
가 . 가  
가 .  
SyncEdit 가 2  
가 .  
DataTable1 2 .

```
496 procedure TWinForm.InitializeDataComponent;
497 var
498     i: Integer;
499     DataTable1: DataTable;
500 begin
501     Connection1 := SqlConnection.Create(conStr);
502     Connection1.Open();
503     DataAdapter1 := SqlDataAdapter.Create(selectStr, Connection1);
504     DataAdapter1.Fill(DataSet1, 'customers');
505     DataTable1 := DataSet1.Tables['customers'];
506     DataView1 := DataTable1.DefaultView;
507     //Bind the DataGrid
508     DataGrid1.SetDataBinding(DataView1, '');
509     //Bind the TextBoxes
```

SyncEdit

가

Shift-Ctrl-J

SyncEdit

SyncEdit

가

```
496 procedure TWinForm.InitializeDataComponent;
497 var
498     i: Integer;
499     DataTable1: DataTable;
500 begin
501     Connection1 := SqlConnection.Create(conStr);
502     Connection1.Open();
503     DataAdapter1 := SqlDataAdapter.Create(selectStr, Connection1);
504     DataAdapter1.Fill(DataSet1, 'customers');
505     DataTable1 := DataSet1.Tables['customers'];
506     DataView1 := DataTable1.DefaultView;
507     //Bind the DataGrid
508     DataGrid1.SetDataBinding(DataView1, '');
509     //Bind the TextBoxes
```

SyncEdit

DtaTable

CustTable



```
procedure TForm1.InitializeDataComponent;
497 var
498     i: Integer;
499     CustTable: DataTable;
500 begin
501     Connection1 := SqlConnection.Create(conStr);
502     Connection1.Open();
503     DataAdapter1 := SqlDataAdapter.Create(selectStr, Connection1);
504     DataAdapter1.Fill(DataSet1, 'customers');
505     CustTable := DataSet1.Tables['customers'];
506     DataView1 := CustTable.DefaultView;
507     //Bind the DataGrid
508     DataGrid1.SetDataBinding(DataView1, '');
509     //Bind the TextBoxes
```

SyncEdit                   가 Function                   ,                   ,                   .

가                   SyncEdit                   가                   SyncEdit

가                   .

Error Insight

Delphi 2005                   Error Insight

,                   ,                   가 Delphi

C#                   IDE 가                   ,                   ,

가                   가                   Error

Insight                   가                   .

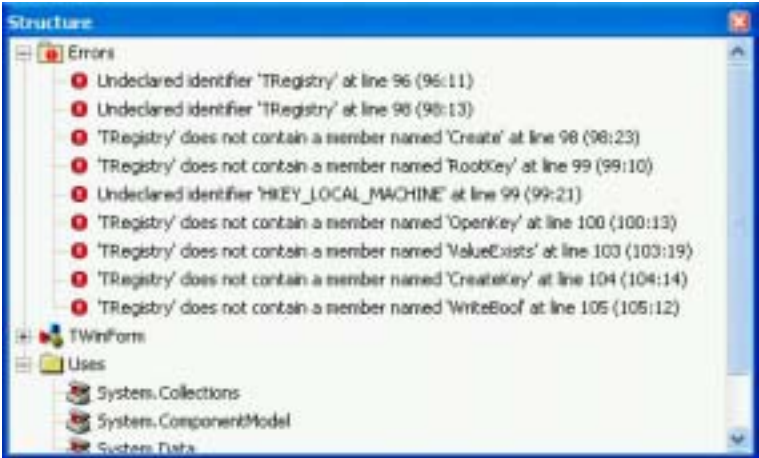
```
procedure TForm1.Button1_Click(sender: System.Object;
e: System.EventArgs);
var
  RegVar: TRegistry;
begin
  RegVar := TRegistry.Create;
  RegVar.RootKey := HKEY_LOCAL_MACHINE;
  if RegVar.OpenKey('HKEY_CURRENT_USER\Software\' +
    'Borland\BDS\3.0\Form Design', False) then
  begin
    if not RegVar.ValueExists('Embedded Designer') then
      RegVar.CreateKey('Embedded Designer');
    RegVar.WriteBool('Embedded Designer', False);
  end;
end;
```

가

가

Errors

가



, TRegistry

Borland.Vcl.Registry

HKEY\_LOCAL\_MACHINE

Borland.Vcl.Windows unit's usage

가

가

가

Tools|Options                      Error Insight                      가                      .

Help Insight

Delphi200                      Code Insight                      Help Insight                      .

Help Insight Delphi                      ,                      ,                      ,  
                    ,                      . Help Insight

가



Help Insight

가

Help Insight      Code Insight                      Class Completion      Argument Value List

가                      . Code Insight

Help Insight

, Help Insight      SqlConnection                      BeginTransaction  
                    .                      Help                      Code Insight(Code Completion)

Begn Transaction



Option   Code Insight   Help Insight   가   .

Delphi2005   가   가

. Code Editor   History Tab  
가   ,

\_\_history   .

Local   , Delphi IDE

10   .

StarTeam

StarTeam   .

. StarTeam   가

StarTeam   Delphi2005   .

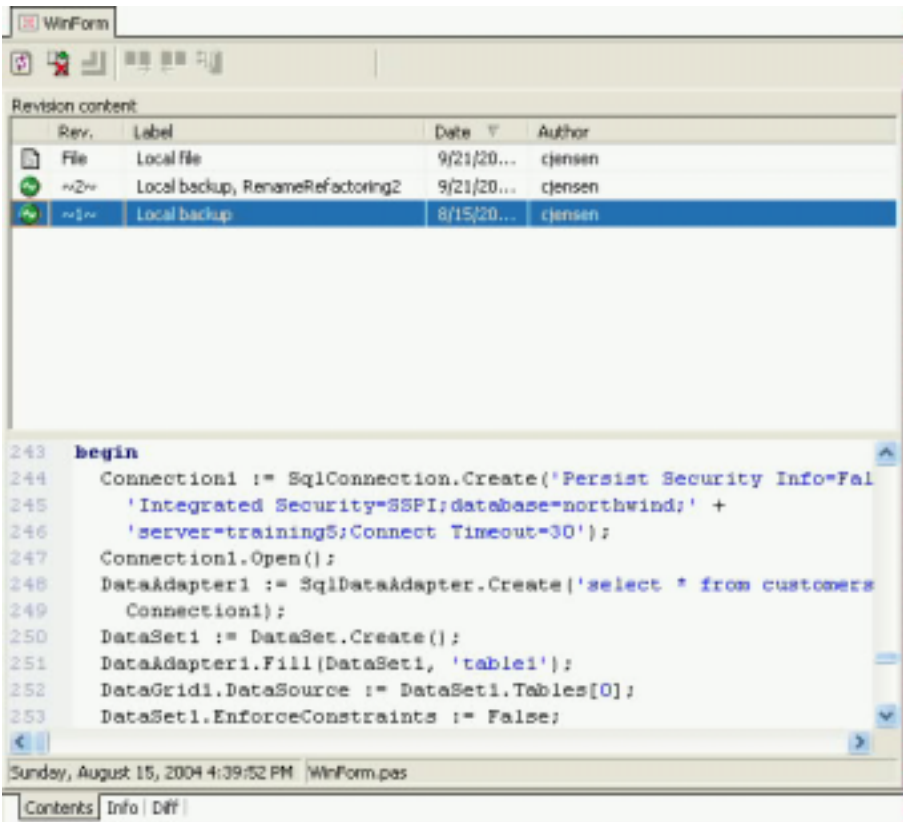
History Manager   VCL   VCL.NET   DFM   .

DFM   ,

Delphi  
DFM  
3  
Content, Info, Diff

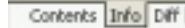
Content

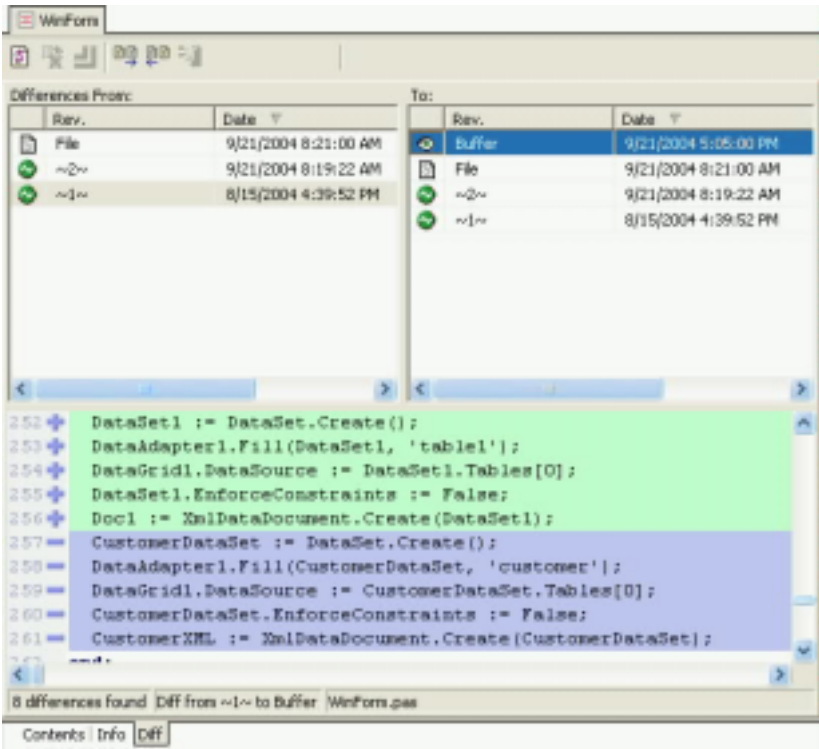
Content  
가



(Ctrl -C) 가 (Ctrl-V)  
가 . ,  
Rever  
.

**Info**  
가 . 가  
StarTeam StarTeam  
Delphi 2005 .  
가 .





Code Navigation

Delphi 2005      Code Navigation      Delphi

                         Ctrl-Shift-Up      (      Ctrl-Shift-Down      )      Delphi

Delphi      Code Navigation

                         .      interface      implementation

unit      initialization      finalization      Ctrl-Shift-Up

Code navigation      C#      C#      가      . -

C#      Delphi      2

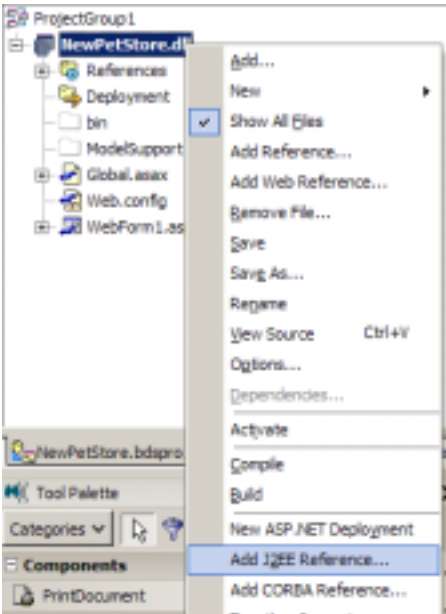


Delphi2005  
.  
(  
) Toggle Comment Ctrl-/ .  
Delphi2005 “//” 가 .  
Toggle Comment  
Ctrl-/ . “//”가 .  
.  
Ctrl-Shift 0 9  
가 가 . 가  
가  
가 가 Ctrl + 0-9  
.  
Ctrl-Shift-1  
가 Ctrl-1  
.  
Delphi2005 . 가  
가  
.  
Delphi 2005 | Tools | Option  
Environment Option . Autosave Options Project desktop  
.

J2EE / CORBA .NET – Janeva

Janeva( ) J2EE(Java 2 Enterprise Edition)  
CORBA(common object request broker architecture Delphi 2005  
. Janeva  
.NET .NET  
가 .

J2EE CORBA Delphi2005 , Delphi2005 Menu |  
Project Add J2EE Reference Add CORBA Reference

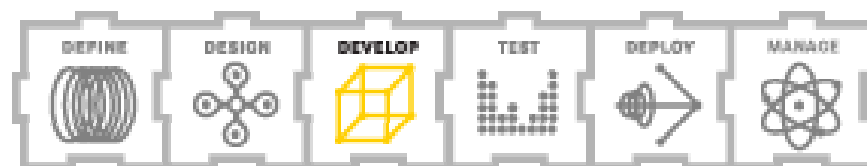


J2EE EJB jar/ear CORBA  
IDL . J2EE EJB jar ear  
Enterprise Java Bean .



# VCL.NET

Borland®  
Delphi™ 2005



## VCL.NET

.NET Delphi ( .NET  
.NET RTL ) Win32 Delphi VCL 100  
.NET . VCL.NET 가 ,  
VCL.NET .NET  
100 , . VCL.NET  
Delphi 2005( .NET Delphi 8)  
.  
VCL.NET VCL Win32 .  
Win32 Delphi .NET .  
Delphi 2005 가 VCL.NET .  
가  
Delphi Win32 .NET .  
가 (RCWs) (PInvoke) . Delphi  
2005 가 (VLI)  
. 가 .NET PInvoke 가  
.NET Win32 DLL .  
.NET .NET PInvoke  
. PInvoke [DLLImport]  
DLL  
DLL export import .  
PInvoke 가 . , [DLLImport]  
DLL ( ) . ,

DLL 가 , [DLLImport]

. DLL Export .

Win32 Delphi Win32 DLL Export

:

```
function ConvertCtoF(CentValue: Integer): Integer; stdcall;
function ConvertFtoC(FahrValue: Integer): Integer; stdcall;
```

Pinvoke Import unit  
가 ( Win32DLL.dll DLL ):

```
function ConvertCtoF; external;
[DllImport('Win32DLL.dll', CharSet = CharSet.Auto,
  EntryPoint = 'ConvertCtoF')]
function ConvertFtoC; external;
[DllImport('Win32DLL.dll', CharSet = CharSet.Auto,
  EntryPoint = 'ConvertFtoC')]
```

가 DLL

Import 가 가 가 .

DLL 가

DLL .

- .Vcl.Win32 namespaces uses 가
- , DLL Export .
- .Vcl.Win32 unit Supports Funtion , DLL ( 가 , DLL ),

Supports funtion DLL export funtion

, Supports 가 Supports

2

. DLL  
.  
named DLL export named  
DLL exception  
Supports false .  
DLL 가

```
type
IWin32DLLInt = interface
    function ConvertCtoF(CentValue: Integer): Integer;
    function ConvertFtoC(FahrValue: Integer): Integer;
end;
```

Win32DLL.dll 가 mylib  
, 가 IMyWin32DLL  
(ConvertCtoF) 가

```
var
    MyDLL: String;
    MyWin32DLL: IWin32DLLInt;
begin
    MyDLL := ExtractFilePath(Application.ExeName) +
        '\mylib\Win32DLL.dll' ;
    if not Supports(MyDLL, IWin32DLLInt, MyWin32DLL) then
        MessageBox.Show(self, 'Could not load Win32DLL.dll')
    else
        NewInt := MyWin32DLL.ConvertCtoF(100);
```

**(Partially Trusted Callers)**

VCL.NET .

.

, URL .exe

.NET 가

가 API

.

VCL.NET Delphi 2005 .NET VCL.NET

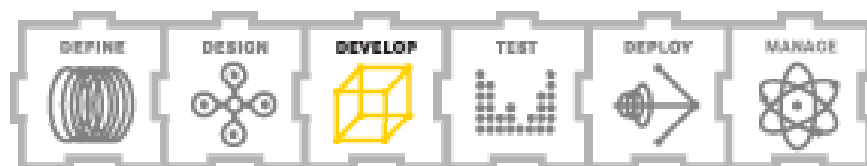
가

.



# Delphi

Borland®  
Delphi™ 2005



## Delphi

Delphi 2005 . Delphi 2005 가 .  
가 C# , Delphi 2005  
C# Intermediate  
Language(IL) .  
가 Delphi . 32  
가 .NET IL  
가 Delphi 2005

Delphi Win32 .NET 가 .

### Win32 .NET Delphi

가 Delphi 2005 Delphi 가 .가  
for...in .

#### For...In

Delphi C# foreach  
. Delphi for...in . Delphi  
for...in .  
, for...in .

, DataTable's Rows ( DataRowCollection  
 ) DataRows .

```
var
    Row: DataRow;
begin
    //...
    for Row in MyDataTable.Rows do
        ListBox1.Items.Add(Row[0].ToString);
```

.NET Delphi **for...in**  
 . IEnumerable GetEnumerator  
 , , , . Win32  
**for...in** public GetEnumerator function 가 , , ,  
 . GetEnumerator TList, TCollection, TStrings,  
 TMenuItem, Tfields .

### UTF8

Delphi UTF8 Unicode .  
 ANSI . .NET Delphi  
 CLS (common language specification)

## .NET Delphi

.NET Delphi .NET Delphi 8  
 .NET 가  
 . namespaces , (forward-declared record  
 type) , .NET VCL  
 . .NET Delphi .

Delphi	Namespaces
.NET	가 unit namespaces unit namespace .
C#	Delphi 가 namespaces namespaces , namespaces , namespace .
Delphi 2005	namespaces unit namespaces . namespaces . , unit namespaces 가 . . unit (.) , unit namespaces . unit namespace unit . , unit YourCompany.Data.Unit1 unit YourCompany.Data namespaces . YourCompany.Data.Unit2 YourCompany.Data.Unit3 unit YourCompany.Data namespaces .
Delphi	, , , 가 .NET , YourCompany.Data.Unit1 Delphi unit .NET namespaces YourCompany.Data.Units Unit1 . .NET Delphi Delphi .NET Delphi 가 .NET

.NET 가 Delphi  
procedure funtion .

**.NET VCL**  
VCL.NET .NET .

(DLL ) VCL.NET .

가 DLL unit  
DLL 가  
UNIT .  
DLL .

DLL PenWin.dll .  
DLL OS DLL . Delphi PenWin unit  
DLL PenWin.dll . unit PenWin  
PenWin.dll  
UNIT  
PenWin.dll 가 .  
UNIT PenWin.dll PenWin.dll .

unit  
unit 가 .  
unit unit  
( DCPIL ) , DLL

. unit 쓰 unit  
DLL  
Delphi Win32 가 unit  
.NET Delphi  
) (Forward Declared 0  
.NET Delphi VCL FCL  
가  
가 가  
, , 가 , ,  
.  
.

## Delphi Win32

Delphi Win32 .NET Delphi 2005 가  
Win32  
.NET  
Delphi Wi32 .NET  
. Delphi  
가 IDE Win32  
가 .NET  
가 Win32  
.

Win32				Delphi
2005	Delphi Win32	가		.
<b>Funtion Inline</b>				
Funtion Inline	Win32	가		.
		(	, funtion, procedure)	
			. Funtion Inline	function , procedure,
				.
	가		가	.
가	funtion, procedure,			.
				.
	가	,	가	
				.
	{ \$INLINE }			ON, OFF,
AUTO			. ON	
가			가	
			. OFF	
				.
AUTO		{ \$INLINE }		
가 32				.
Funtion Inline		가		.
	{ \$INLINE }		AUTO	
	가	가		.
		가		.
				.

가 ,  
가 ,  
가  
가 VCL RTL  
가  
가

**Nested Type**

Nested Type .NET Delphi  
Nested Type . Delphi Win32  
Nested Type . Delphi 2005  
Nested Type .

```
type
  TOuterClass = class
    strict private
      myField: Integer;
    public
      type
        TInnerClass = class
          public
            myInnerField: Integer;
            procedure innerProc;
          end;
          procedure outerProc;
        end;
      end;
```



Nested Type

Function

.. Nested Type

Nested

Type

Nested Type

.NET

가

Win32

Nested

Type

가

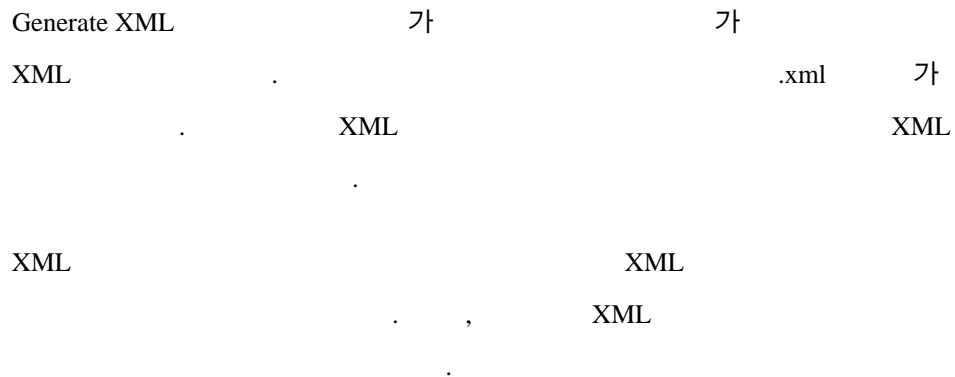
TdateTime

Nested Type

```
type
  TTemperatureConverter = class(TObject)
  public
    const AbsoluteZero = -273;
    procedure ConvertFtoC(Temp: Integer): Integer;
//...
```

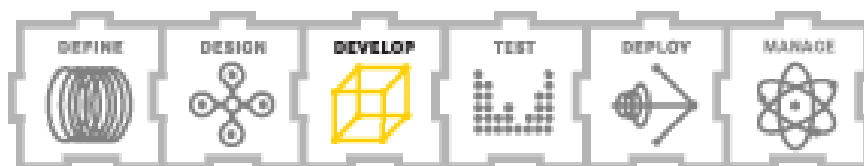
4 SSE3		SSE2	Op
Delphi	Win32	가	4 SSE3 SSE2 op ,

<b>XML</b>						
XML	.NET	Delphi 8	C#Builder	.		Win32
	XML			.		
XML Doc						XML
			. Delphi 2005			



# The Delphi Debuggers

Borland®  
Delphi™ 2005



## Delphi

Delphi 2005 가 Win32 .NET .

Delphi 2005 가 IL Win32 .NET

Delphi 2005 , ASP.NET , Windows Forms , VCL.NET , Delphi 2005 .NET , COM / Win32 DLL , Delphi 2005 Win32 .

가 .NET Win32 .

Delphi 2005 Breakpoint , Call Stack , CPU ,

가 가 , , .

가 , Win32 가

Breakpoint . Breakpoint .NET

가

, .NET 가 CPU .NET 가 IL

Win32 IL Win32

Delphi 2005

Exception Dialog Enhancements( )

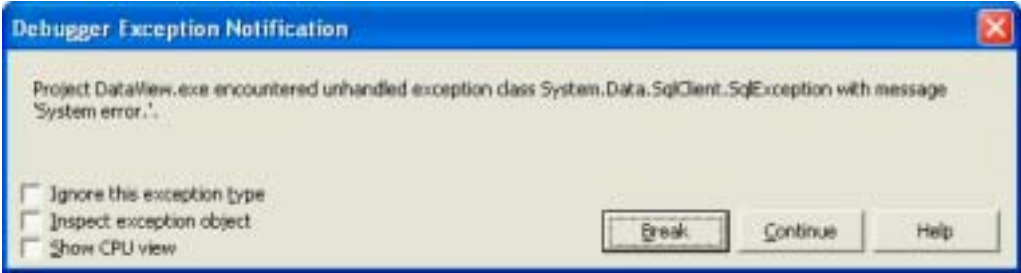
Exception . Exception

( ) Delphi 2005 IDE

가 , ,

가 가

Exception Dialog



Ignore the exception type  
가

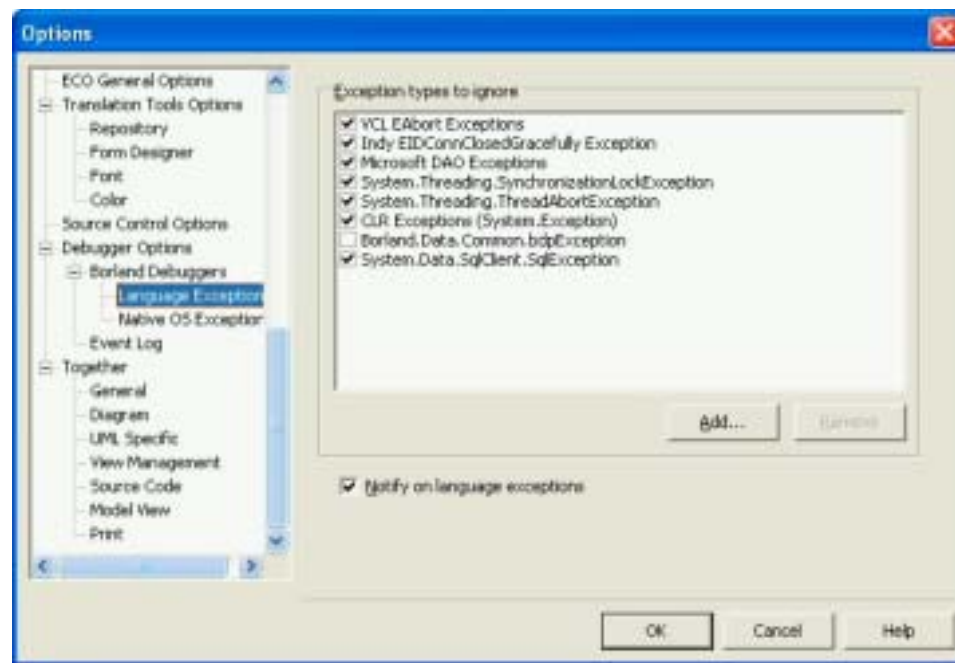
가

### Exception

### Exception

• (

.)



## Debugger Exception Notification

Ignore this exception type

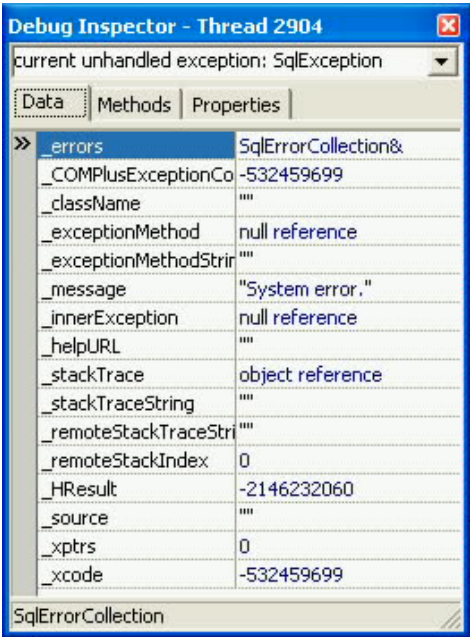
Break

## Debugger Inspector 71

Debugger Inspector                      Exception                      .                      ,

SQLException                      \_errors

SqlErrorCollection                      .



가                      CPU

가                      .                      Break                      CPU

                    , CPU                      ,

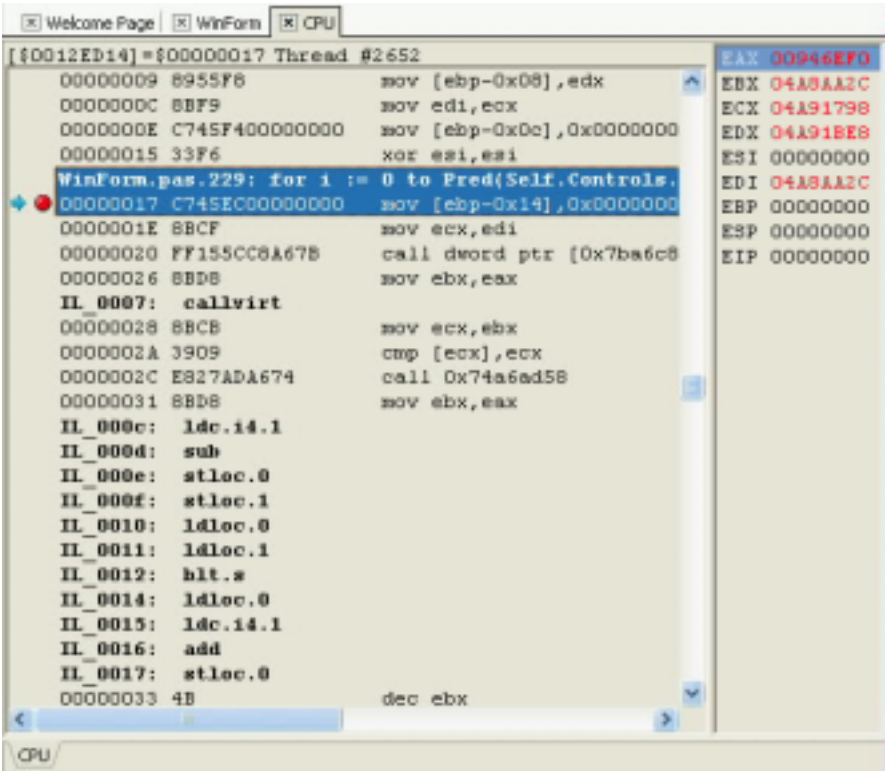
                    .

CPU                      Win32                      .NET

..NET                      IL                      IL

                    .

.NET CPU CPU  
Breakpoint ( )  
Breakpoint Delphi .NET Delphi 가  
IL JIT 가



( ) IL 가  
CPU . 가  
가 . IL 가 IL . 가  
off JIT .

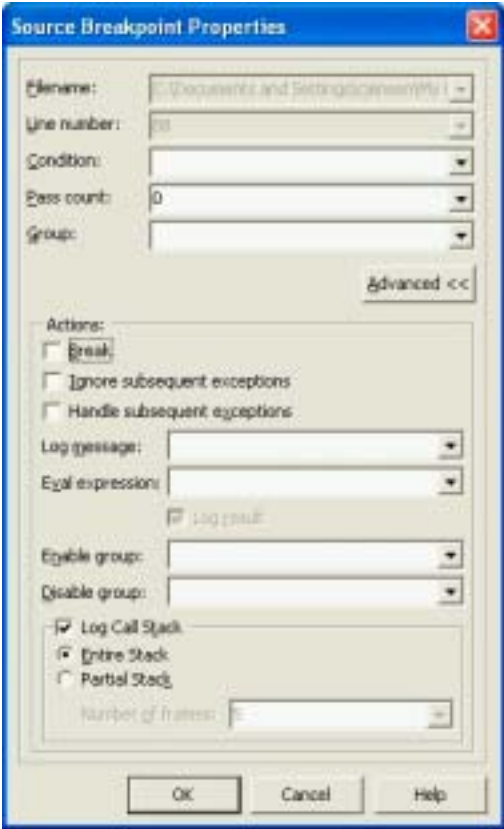


Breakpoints(Breakpoint)

## Breakpoint 가

Breakpoint

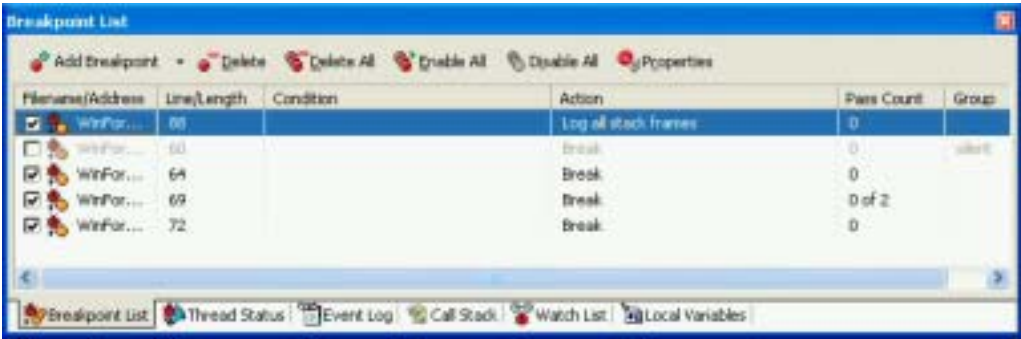
가 Breakpoint



Breakpoint  
가 Breakpoint

**Breakpoint Dialog Box (Breakpoint )**

Breakpoint 가 가 . , Breakpoint , , , .

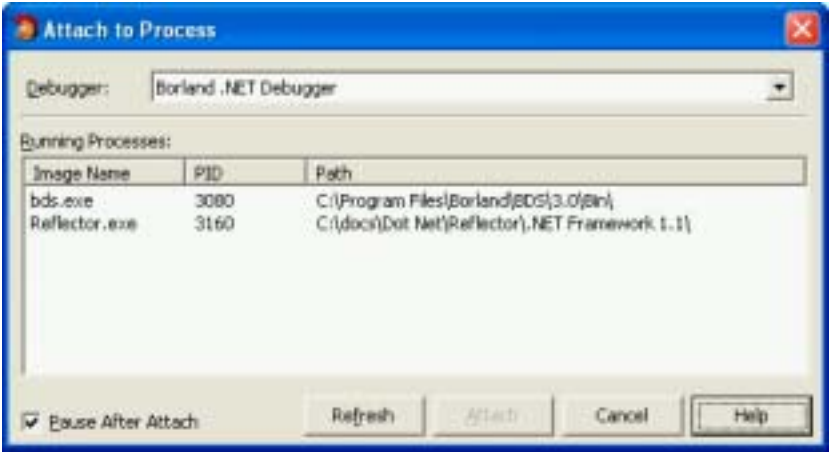


Breakpoint Dialog 가 Breakpoint Breakpoint 가 . Breakpoint Breakpoint , , Pass Count, .

Breakpoint Condition .



Delphi 2005  
Run |  
Attach , Delphi 2005  
.NET , CLR (common language runtime)가  
가

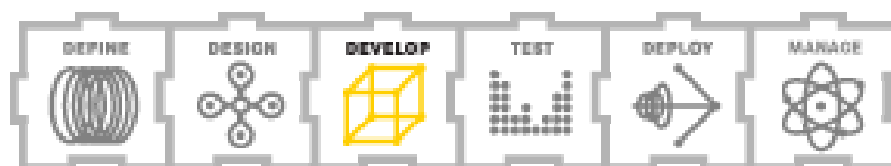


Win32 , Win32  
가  
Delphi 2005 |

Win32 Evaluator  
Delphi 8 C#Builder Call  
Stack Win32



# Borland® Delphi™ 2005





Delphi  
Delphi2005

ODBC (open database connectivity)    OLEDB Providers

Win32

BDE (Borland Database Engine), dbExpress, IBExpress (InterBase Express), dbGo for ADO, MyBase (ClientDataSet)    DataSnap

Delphi for .NET    Delphi Win32

.NET    Win32

VCL.NET

Delphi .NET    C#    ADO.NET    FCL

Delphi .NET    C#    가

, ADO.NET    Dta Povider    . BDP(Borland

Data Provider)    ADO.NET    BDP

,    , ADO..NET

Delphi 2005    Delphi8    C#Builder

가

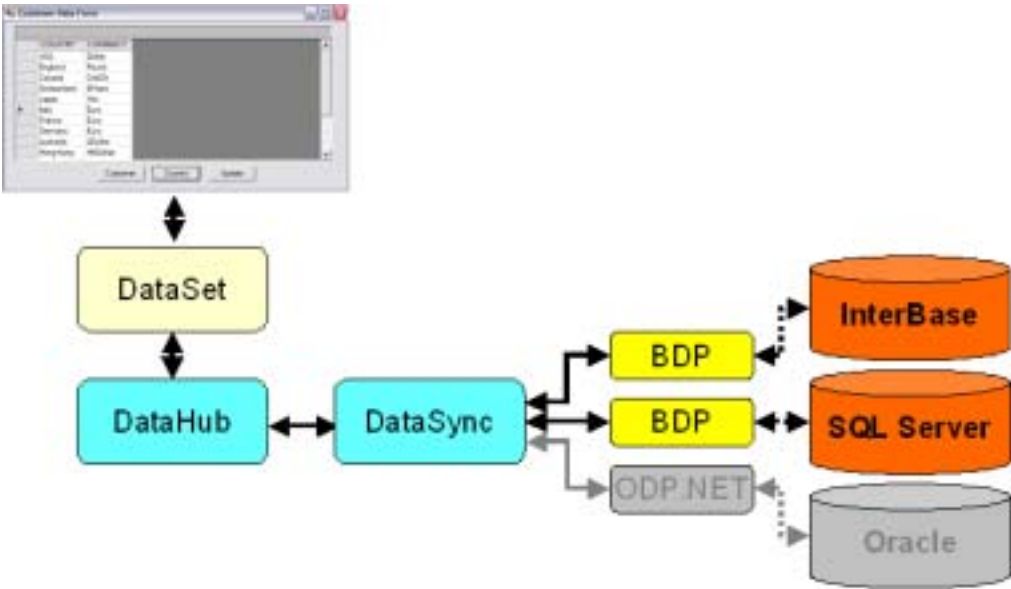
ADO.NET    RAD

ADO.NET    .NET

ADO.NET    Delphi    ADO.NET

Delphi  
.NET RAD , ADO.NET Delphi  
가 .  
ADO.NET RAD ADO.NET  
가 . DataSync DataHub 가  
ADO.NET RemoteServer  
RemoteConnection .  
가 .  
**DataSync DataHub** ,  
Delphi 2005 ADO.NET  
가 , DataSync DataHub . ADO.NET  
Data Provider  
 ,  
 .  
DataSync DataHub ADO.NET 가  
 . DataSync DataHub ADO.NET DataSet  
IDbConnection ADO.NET  
 ,  
 ,





DataSync    DataHub    (data remoting components)    .NET

**DataSync**

DataSync    Data Provider    , DbDataAdapter  
DataSync  
DataTable  
DataTable

DataSync 가 DbDataAdapter    DataSync 가

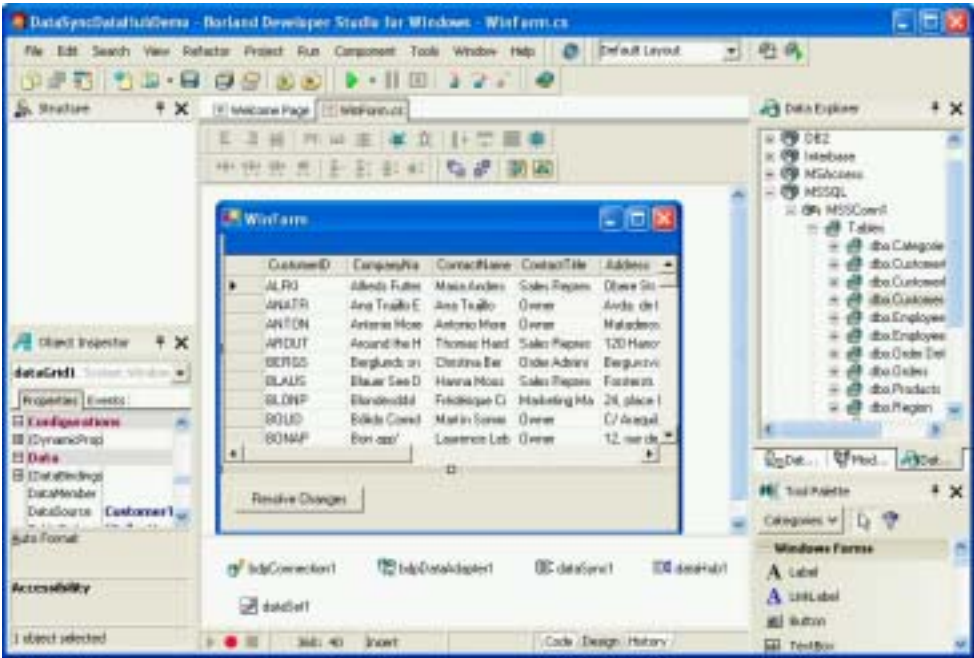
Data Provider    Data Provider  
FCL    , SqlDataAdapter    OdbcDataAdapter  
IBM.Data.DB2    Oracle.Data.Provider    3  
DataSync

DataHub

DataHub                      DataSync                      DataSync  
   DataSet  
   , DataHub                      . DataSync      DataHub 가

BDP 가

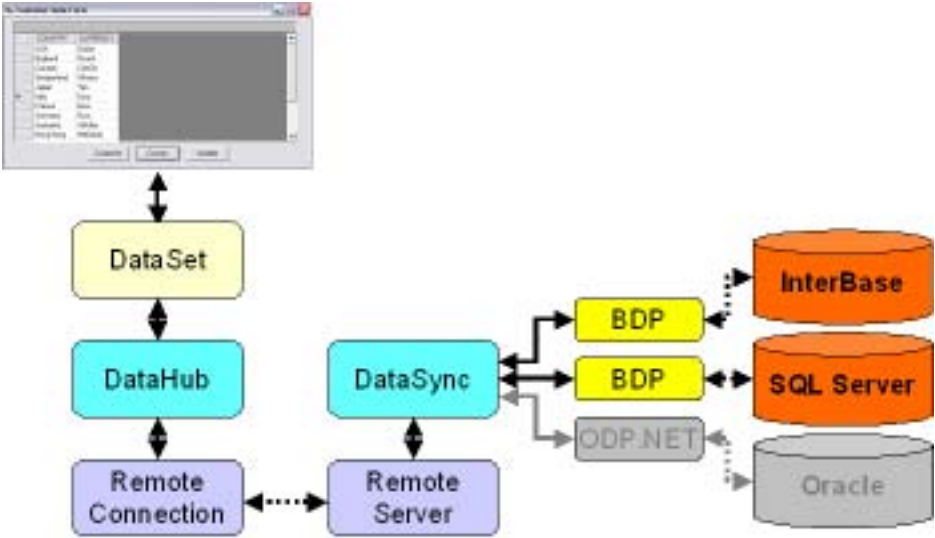
   C#                      DataSet                      DataSync  
DataHub                      .                      DataGrid  
DataSync/DataHub



DataHub  
   . DataHub      ApplyChanges  
DataSync                      DataSync                      DataTables

가 . Resolve  
Changes dataHub1.ApplyChanges() .  
  
**RemoteServer RemoteConnection (remoting)**  
.NET .NET (remote objects)  
.  
.  
DataSets 가  
,  
가 . .NET .  
, DataSets 가  
.  
Delphi 2005 .NET 가  
DataSync DataHub . 가 ,  
RemoteServer RemoteConnection DataSync DbDataAdapters 가  
DataHub DataSet 가  
.  
RemoteServer RemoteConnection DataSync

DataHub



RemoteServer

RemoteServer

DataSync

RemoteConnection

. RemoteServer RemoteConnection

HTTP TCP

RemoteServer

DataSync

DataSync DataSync 가

Provider . ChannelType (Http Tcp) , Port listen

on , URI( 가 )

RemoteConnection

RemoteConnection

DataSync

. RemoteConnection 가

ChannelType, Port, URL, URI .

Provider 가 RemoteConnection ProviderType .

RemoteConnection DataHub

RemoteConnection . DataHub RemoteConnection

DataSync .

DataSync 가 DataHub

. RemoteConnection RemoteServer .NET

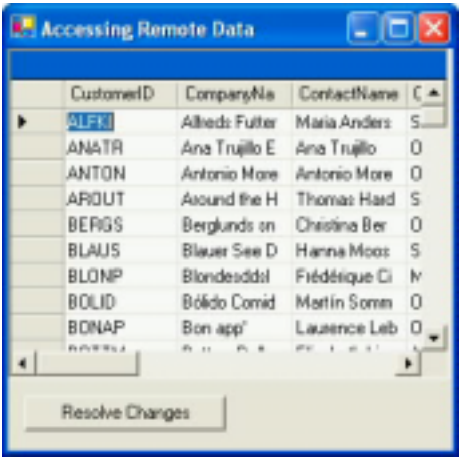
DataSync DataHub .

DataGrid DataSync . ,

Delphi C# .

. ,

.



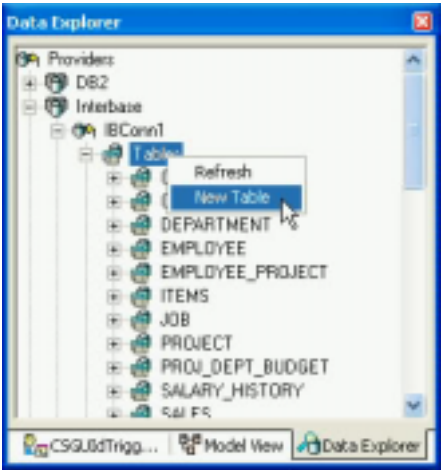
## ADO.NET Borland Data Provider

Borland Data Provider for ADO.NET ADO.NET

ADO.NET BDP

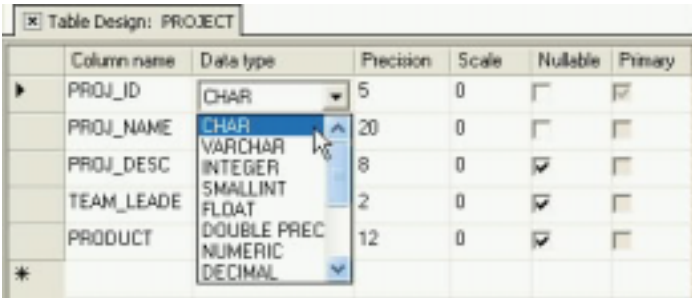
가  
ADO.NET  
ADO.NETBDP BDP  
DataSync, DataHub BDP . DataSync  
DataHub 가 ADO.NET  
Delphi 2005 ADO.NET BDP 가  
BDP Oracle Sybase  
ADO.NET BDP BdpCopyTable 가  
1 ADO.NET BDP  
. BDP Data Explorer(  
) Copy Table  
ADO.NET BDP . ADO.NET  
BDP 가 가  
BDP Provider . BDP  
ADO.NET  
BDP  
Data Explorer  
BDP Data Explorer  
Data Explorer Oracle, DB2, MS SQL Server, InterBase, MS Access ADO.NET BDP  
ADO.NET . Data Explorer

, , Stored Procudure Delphi 2005 IDE . Data  
Explorer BdpConnections , BdpDataAdapters BDP  
.  
Data Explorer Delphi 2005 . Data Explorer  
.  
Stored Procedure , ADO.NET BDP  
.  
Data Explorer Delphi 2005 IDE  
 , , . ADO.NET BDP  
 . Delphi 2005  
ADO.NET  
Data Explorer (connection) . , Tables  
New Table .



Delphi 2005 Table Designer .  
.

Tables  
Alter . (  
Drop .) PROJECT Table  
Designer .



ADO.NET BDP

Data Explorer ADO.NET BDP

, 1

Data Explorer

Copy .  
Paste . New Table Name 가



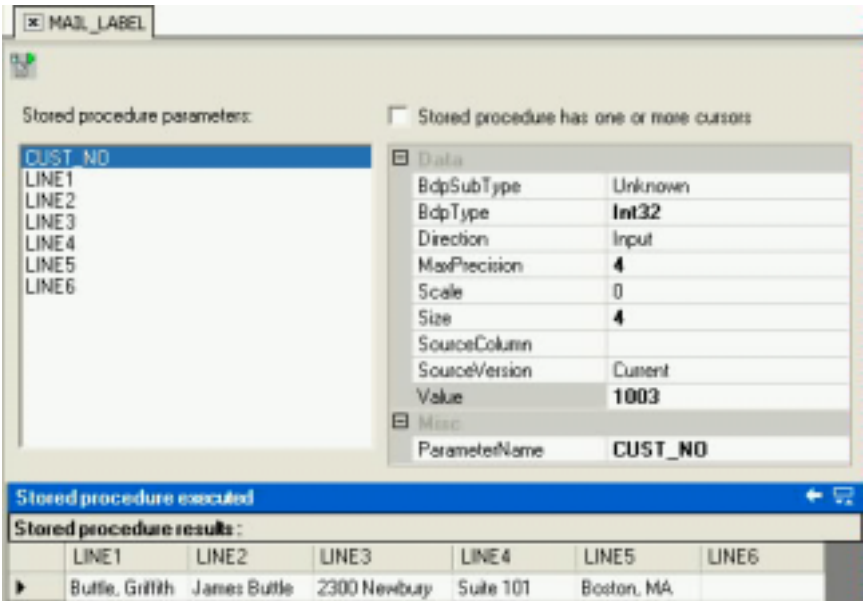


OK

Delphi 2005

**Stored Procedure**

Stored Procedure Data Explorer 가  
. Stored Procedure , Data Explorer Stored  
Procedure View Parameters .  
Delphi 2005 Stored Procedure ,  
, Stored Procedure  
, Stored Procedure Execute( )  
. Delphi 2005 Stored Procedure Stored Procedure  
( 가 가  
)  
가 Stored Procedure . 1003  
(mailing label ) .



Delphi2005

. Delphi 2005  
. Delphi 2005    Delphi    C#    .NET  
Business Objects    for Borland Delphi    Crystal Report  
. Delphi VCL    (VCL Forms (Win32)    VCL.NET    )  
Nevrona Designs    Rave Reports Borland Edition    .

.NET    VCL

.NET Framework    Delphi 8    Win32 Delphi  
. Delphi 2005

가    가    가    dbGo ADO    . dbGo  
ADO    VCL TDataSet  
OLEDB Providers    VCL TDataSet

ActiveX Data Objects . Delphi 2005 VCL.NET dbGo for ADO .

VCL.NET 가 TStoredProc, TSimpleDataSet, TNestedDataSet, TUpdateSql .

DataSnap 가 가 . DataSnap

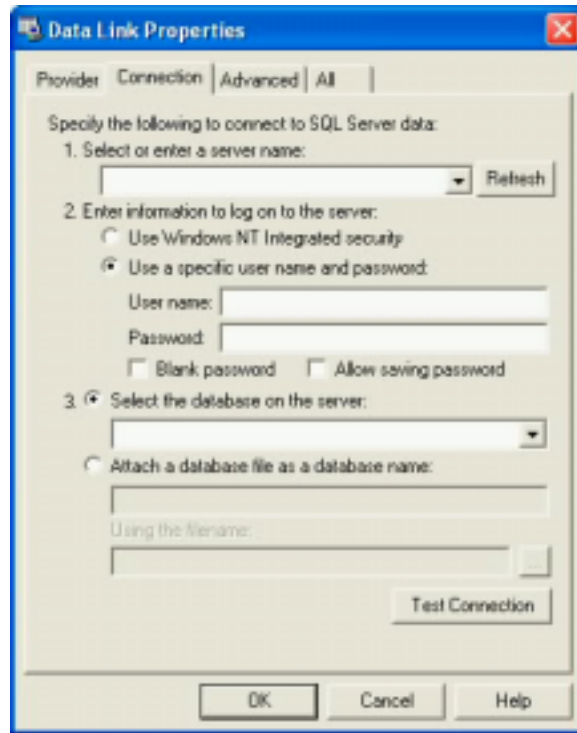
. VCL.NET TConnectionBroker, TSharedConnection, TLocalConnection .

ADO.NET

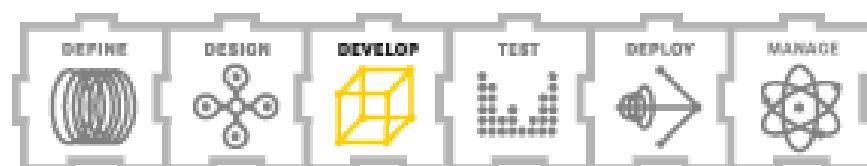
Delphi 2005 SQL Connection, ODBC Connection, OLEDB Connection

ADO.NET . ( ADO.NET BDP , ADO.NET .NET Data Provider .)

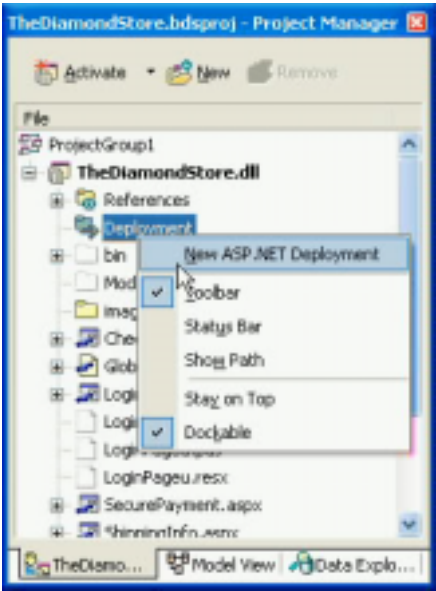
Delphi 2005 IDE 가 Object Inspector ConnectionString (...) Connection String 가 . SqlConnection ConnectionString Connection String .



# Borland® Delphi™ 2005



/			
	,	IDE 가	Delphi
,			.
Delphi			, ,
	가	.	
Delphi 2005			
	. Delphi 2005		
	. Delphi 2005	ASP.NET Web	
Applications, ASP.NET Web Service Applications, Win32 Web Service servers, Win32 Web			
Service clients, Web Broker Web server extensions, WebSnap Web server extensions, Win32			
.NET IntraWeb applications			
.			
.			.
,	(what-you-see-is-what-you-get , wysisyg)	Web Forms	
			.
	,		
가	.	Delphi 2005	
.			
Deployment Manager(		)	
ASP.NET Web applications, ASP.NET Web Service Applications, IntraWeb (Win32			
.NET	)	Delphi 2005	Project Manager
. Project Manager	Deployment		
New Deployment			
.			



XCOPY FTP ( , file transfer protocol) . 가

XCOPY . , 가

XCOPY .

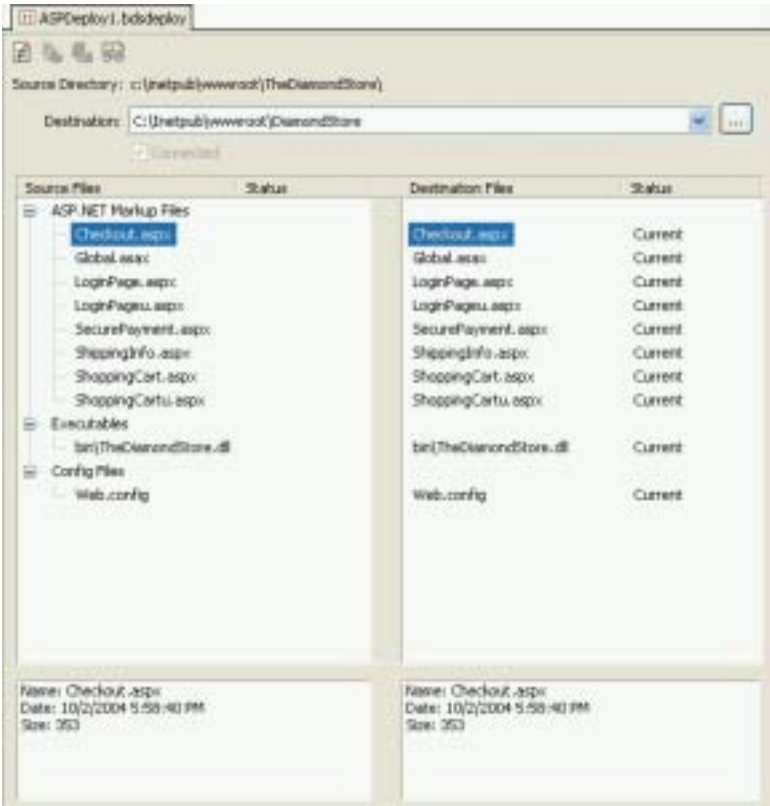
가 가 FTP 가

. FTP 가 FTP

FTP

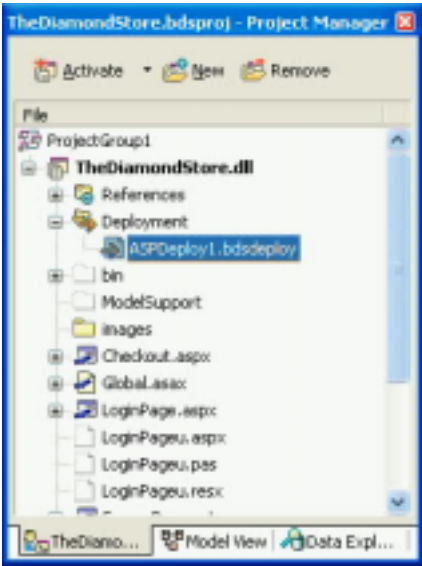
Copy Selected Files to Destination Copy All New and

Modified Files to Destination .



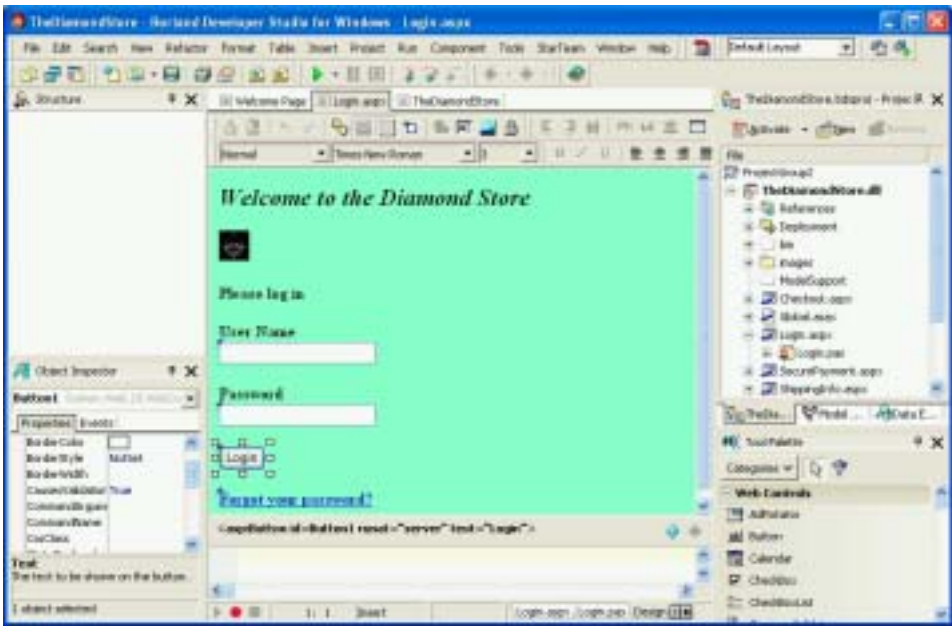
Project Manager    Deployment





Web Forms Designer      HTML

HTML      ASP.NET  
. Delphi 2005      HTML      ,  
ASP.NET      .      ASP.NET  
.



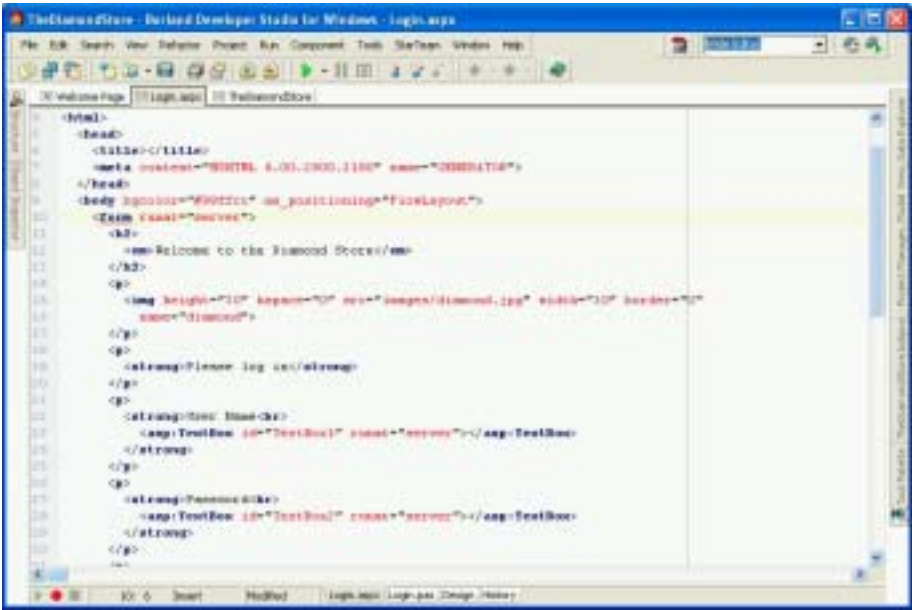
HTML Controls, Web Controls, DB Web Controls      Tool Palette      Web Forms

HTML      .aspx      . Web

Forms      가      .aspx

HTML      .      가      .aspx      .

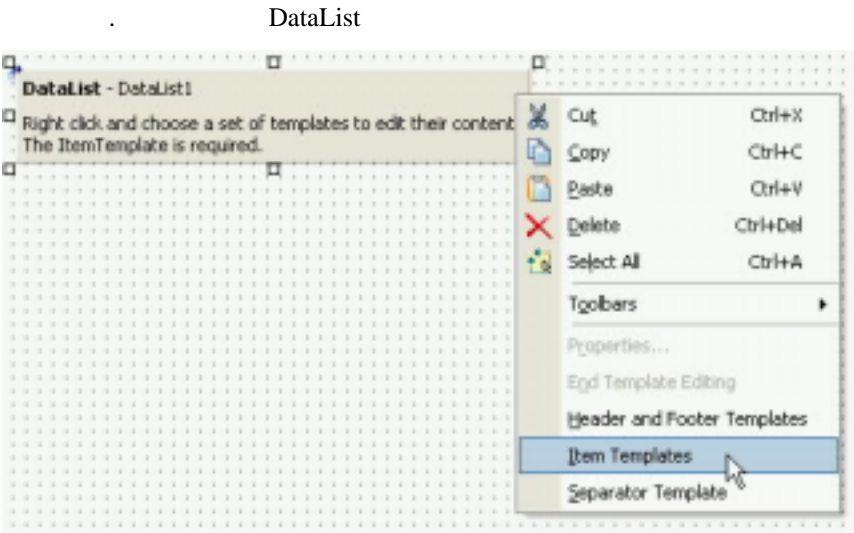
가      .



Delphi 2005 Web Form

. DataList , (footer),

. Delphi 2005 Web Form



가

.

Item

DataList .



End

Template Editing .

Delphi HTML Delphi 2005  
cascading style sheets, CSS  
XHTML .

**Tag**

Tag Delphi 2005 . Tag Web Form Designer  
 , 가 가 가  
가 HTML . Tag HTML  
가 Delphi 2005 HTML .  
Tag <td> . Code  
Insight .



DB

DB ASP.NET  
.NET Web , DB Web  
Forms 가  
.

FCL DB ASP.NET  
. DB ,  
/  
.

DB

Delphi 2005 DB 가  
Delphi 2005 DB Web DBWebAggregateControl,  
DBWebNavigatorExtender, DBWebSound, DBWebVideo ..

DBWebAggregateControl DBWebTextBox Sum, Min, Count  
.

DBWebSound DBWebVideo ASP.NET  
가 . blob(binary large object)  
. , 가 URL  
.

DBWebNavigationExtender , 가  
ADO.NET BDP .  
DBWebNavigationExtender Web Form Button  
DBDataSource, TableName, DataSourceAction 가 .

DataSourceAction DBDataSource .

**DB**

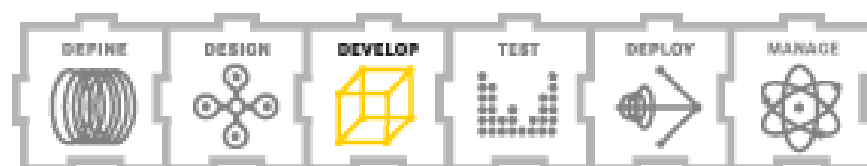
Delphi 2005 DB 가 . DBWebImage  
DBWebDataSource . DBWebImage DBWebSound  
DBWebVideo . DBWebImage  
가 bolb URL  
DBWebImage  
가 bolb .  
 , DBWebDataSource 가 . , - (master-  
detail relationships) ,  
DBWebDataSource .  
DBWebDataSource XML DB  
가 . ,  
XML . , XML ,  
DBWebDataSource XML  
XML .  
IntraWeb  
IntraWeb RAD  
가 ASP.NET  
IntraWeb .

ASP.NET  
가 . IntraWeb  
IntraWeb  
TIWServerController  
IntraWeb  
가  
ASP.NET  
IntraWeb  
가  
IntraWeb  
“Delphi” . VCL VCL.NET  
Tool Palette Delphi 가  
가 IntraWeb  
HTML, WAP (wireless access protocol), HTML 3.2  
IntraWeb 가 가 . IntraWeb  
ISAPI (Internet Server application programming interface)  
HTTP  
IIS (Internet Information Server) IIS IntraWeb  
가 , 가 IntraWeb  
가  
HTTP 가  
Delphi 2005 IntraWeb . ASP.NET  
.aspx . , IntraWeb  
가 HTTP HTML





# Borland® Delphi™ 2005





Delphi  
Delphi2005

ODBC (open database connectivity)    OLEDB Providers

Win32

BDE (Borland Database Engine), dbExpress, IBExpress (InterBase Express), dbGo for ADO, MyBase (ClientDataSet)    DataSnap

Delphi for .NET    Delphi Win32

.NET    Win32

VCL.NET

Delphi .NET    C#    ADO.NET    FCL

Delphi .NET    C#    가

, ADO.NET    Dta Povider    . BDP(Borland

Data Provider)    ADO.NET    BDP

,    , ADO..NET

Delphi 2005    Delphi8    C#Builder

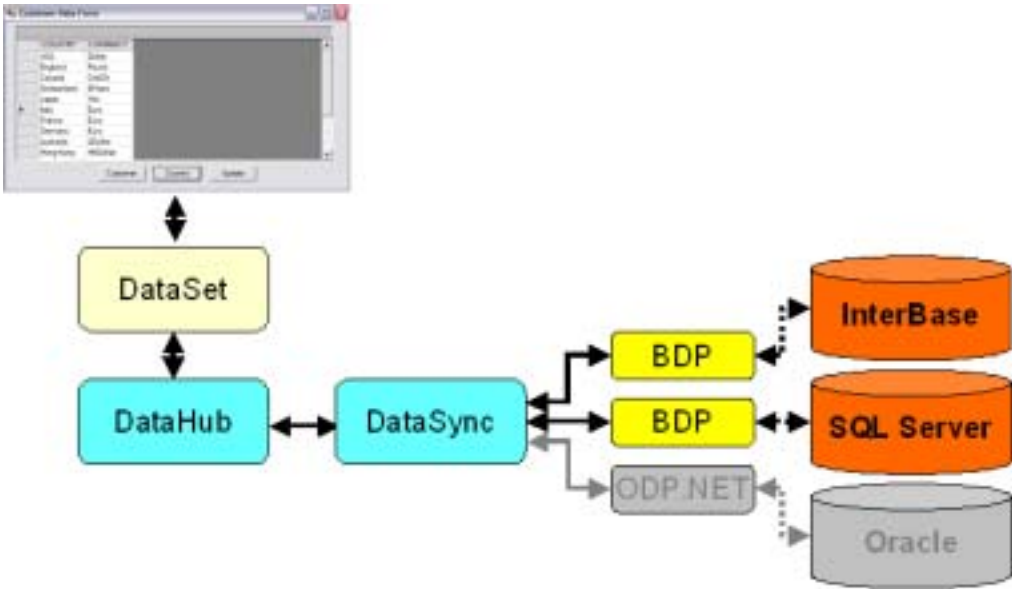
가

ADO.NET    RAD

ADO.NET    .NET

ADO.NET    Delphi    ADO.NET

Delphi  
.NET RAD , ADO.NET Delphi  
가 .  
ADO.NET RAD ADO.NET  
가 . DataSync DataHub 가  
ADO.NET RemoteServer  
RemoteConnection .  
가 .  
**DataSync DataHub** ,  
Delphi 2005 ADO.NET  
가 , DataSync DataHub . ADO.NET  
Data Provider  
 ,  
 .  
DataSync DataHub ADO.NET 가  
 . DataSync DataHub ADO.NET DataSet  
IDbConnection ADO.NET  
 ,  
 ,



DataSync    DataHub    (data remoting components)    .NET

**DataSync**

DataSync    Data Provider    , DbDataAdapter  
DataSync  
DataTable  
DataTable

DataSync 가 DbDataAdapter    DataSync 가

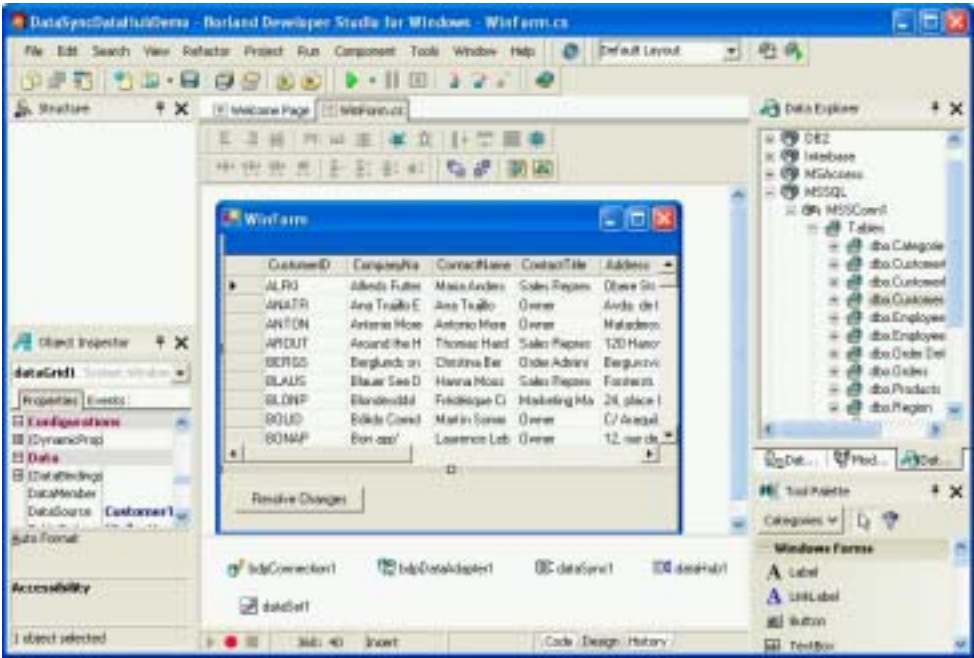
Data Provider    Data Provider  
FCL    , SqlDataAdapter    OdbcDataAdapter  
IBM.Data.DB2    Oracle.Data.Provider    3  
DataSync

DataHub

DataHub                      DataSync                      DataSync  
   DataSet  
   , DataHub                      . DataSync      DataHub 가

BDP 가

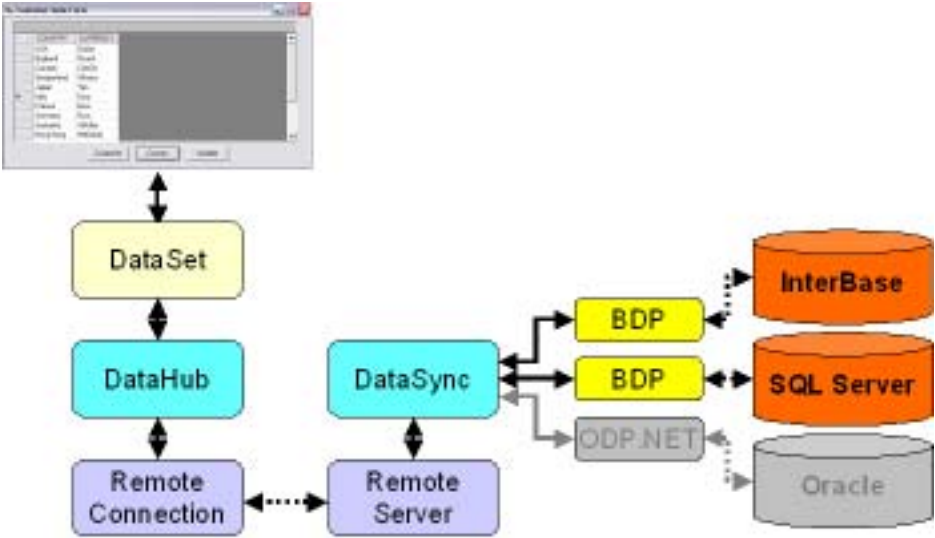
   C#                      DataSet                      DataSync  
DataHub                      .                      DataGrid  
DataSync/DataHub



DataHub  
   . DataHub      ApplyChanges  
DataSync                      DataSync                      DataTables

가 . Resolve  
Changes dataHub1.ApplyChanges() .  
  
**RemoteServer RemoteConnection (remoting)**  
.NET .NET (remote objects)  
.  
DataSets 가  
,  
가 . .NET .  
, DataSet 가  
.  
Delphi 2005 .NET 가  
DataSync DataHub . 가 ,  
RemoteServer RemoteConnection DataSync DbDataAdapters 가  
DataHub DataSet 가  
RemoteServer RemoteConnection DataSync

DataHub



RemoteServer

RemoteServer

DataSync

RemoteConnection

. RemoteServer RemoteConnection

HTTP TCP

RemoteServer

DataSync

DataSync DataSync 가

Provider . ChannelType (Http Tcp) , Port listen  
on , URI( 가 )

RemoteConnection

RemoteConnection

DataSync

. RemoteConnection 가



ChannelType, Port, URL, URI .

Provider 가 RemoteConnection ProviderType .

RemoteConnection DataHub

RemoteConnection . DataHub RemoteConnection

DataSync .

DataSync 가 DataHub

. RemoteConnection RemoteServer .NET

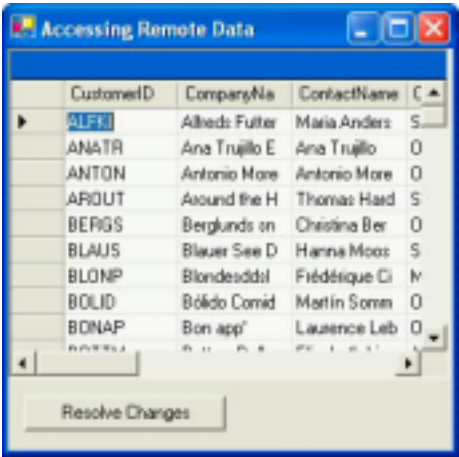
DataSync DataHub .

DataGrid DataSync . ,

Delphi C# .

. ,

.



## ADO.NET Borland Data Provider

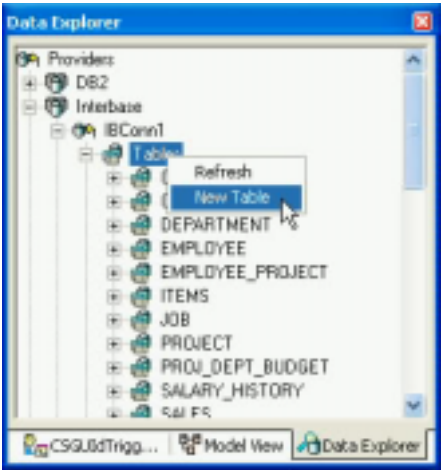
Borland Data Provider for ADO.NET ADO.NET

ADO.NET BDP

가  
ADO.NET  
ADO.NETBDP BDP  
DataSync, DataHub BDP . DataSync  
DataHub 가 ADO.NET  
Delphi 2005 ADO.NET BDP 가  
BDP Oracle Sybase  
ADO.NET BDP BdpCopyTable 가  
1 ADO.NET BDP  
. BDP Data Explorer(  
) Copy Table  
ADO.NET BDP . ADO.NET  
BDP 가 가  
BDP Provider . BDP  
ADO.NET  
BDP  
Data Explorer  
BDP Data Explorer  
Data Explorer Oracle, DB2, MS SQL Server, InterBase, MS Access ADO.NET BDP  
ADO.NET . Data Explorer

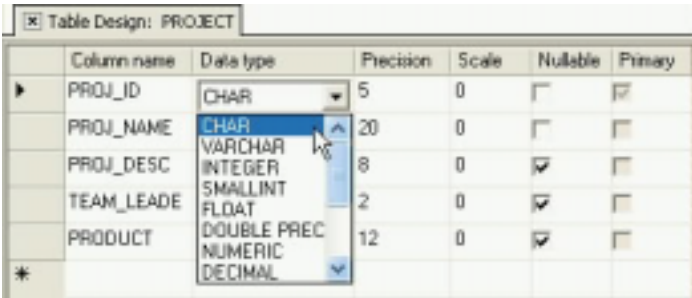
---

, , Stored Procudure Delphi 2005 IDE . Data  
Explorer BdpConnections , BdpDataAdapters BDP  
Data Explorer Delphi 2005 . Data Explorer  
Stored Procedure , ADO.NET BDP  
Data Explorer Delphi 2005 IDE  
ADO.NET  
Data Explorer (connection) , Tables  
New Table



Delphi 2005 Table Designer .

Tables  
Alter . (  
Drop .) PROJECT Table  
Designer .



ADO.NET BDP

Data Explorer ADO.NET BDP

, 1

Data Explorer

Copy .  
Paste . New Table Name 가

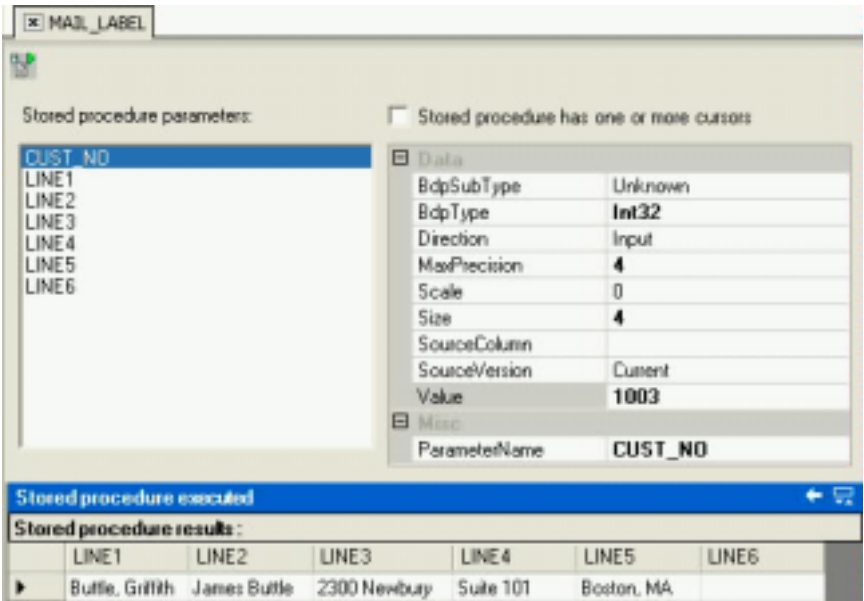


OK

Delphi 2005

**Stored Procedure**

Stored Procedure Data Explorer 가  
. Stored Procedure , Data Explorer Stored  
Procedure View Parameters .  
Delphi 2005 Stored Procedure , ,  
, Stored Procedure  
, Stored Procedure Execute( )  
. Delphi 2005 Stored Procedure Stored Procedure  
( 가 가  
)  
가 Stored Procedure . 1003  
(mailing label ) .



Delphi2005

. Delphi 2005  
. Delphi 2005    Delphi    C#    .NET  
Business Objects    for Borland Delphi    Crystal Report  
. Delphi VCL    (VCL Forms (Win32)    VCL.NET    )  
Nevrona Designs    Rave Reports Borland Edition    .

.NET    VCL

.NET Framework    Delphi 8    Win32 Delphi  
. Delphi 2005

가    가    가    dbGo ADO    . dbGo  
ADO    VCL TDataSet  
OLEDB Providers    VCL TDataSet

ActiveX Data Objects . Delphi 2005 VCL.NET dbGo for ADO .

VCL.NET 가 TStoredProc, TSimpleDataSet, TNestedDataSet, TUpdateSql .

DataSnap 가 가 . DataSnap

. VCL.NET TConnectionBroker, TSharedConnection, TLocalConnection .

ADO.NET

Delphi 2005 SQL Connection, ODBC Connection, OLEDB Connection

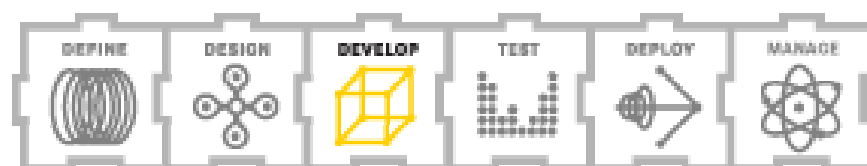
ADO.NET . ( ADO.NET BDP , ADO.NET .NET Data Provider .)

Delphi 2005 IDE 가 Object Inspector ConnectionString (...) Connection String 가 . SqlConnection ConnectionString Connection String .

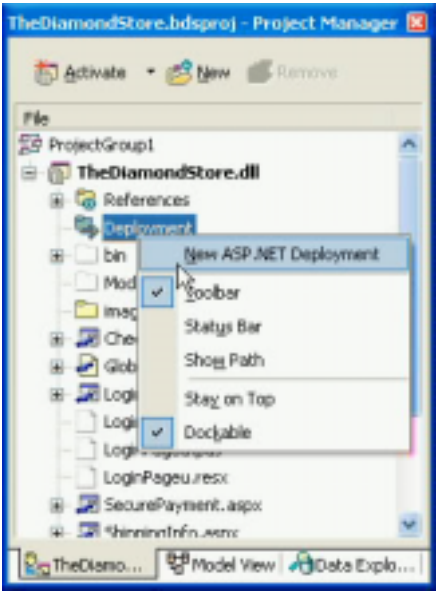




# Borland® Delphi™ 2005



/	
	IDE 가 Delphi
Delphi	
가	
Delphi 2005	
Delphi 2005	
Delphi 2005	ASP.NET Web
Applications, ASP.NET Web Service Applications, Win32 Web Service servers, Win32 Web Service clients, Web Broker Web server extensions, WebSnap Web server extensions, Win32 .NET IntraWeb applications	
(what-you-see-is-what-you-get , wysisyg)	Web Forms
가	Delphi 2005
Deployment Manager( )	
ASP.NET Web applications, ASP.NET Web Service Applications, IntraWeb (Win32 .NET ) Delphi 2005 Project Manager	
Project Manager	Deployment
New Deployment	



XCOPY FTP ( , file transfer protocol) . 가

XCOPY . , 가

XCOPY .

가 가 FTP 가

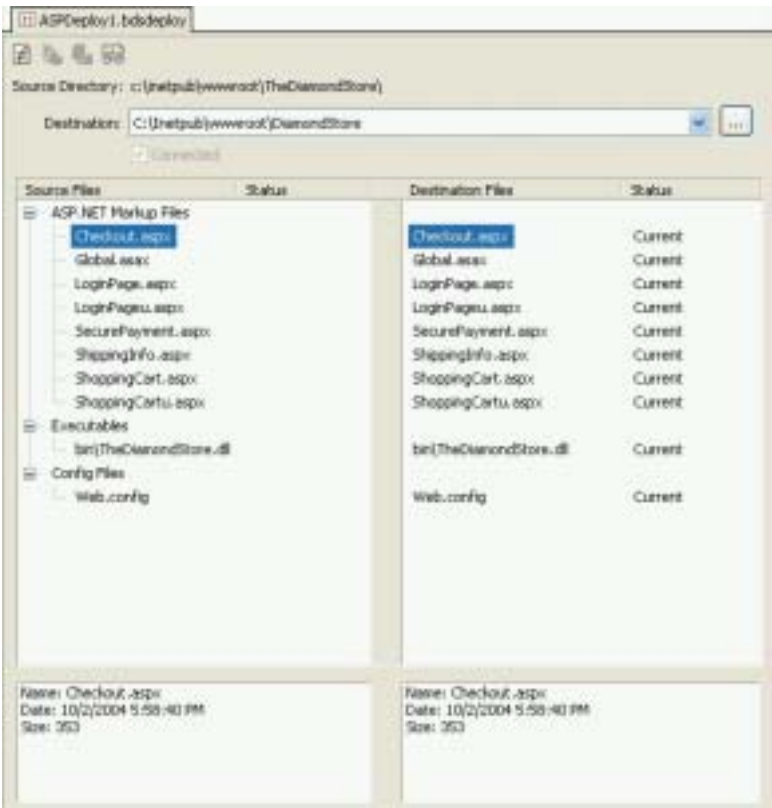
. FTP 가 FTP

. FTP

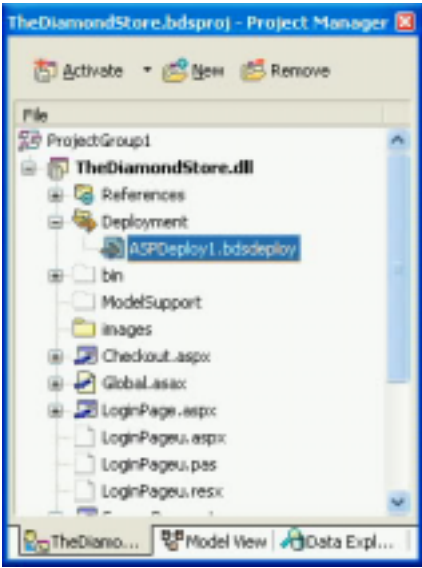
FTP

Copy Selected Files to Destination Copy All New and

Modified Files to Destination .



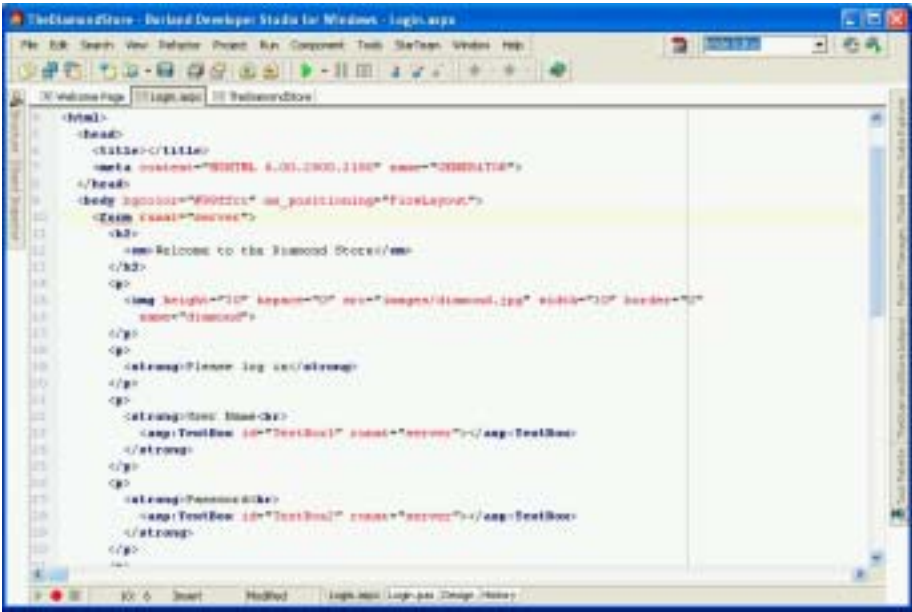
Project Manager    Deployment



Web Forms Designer      HTML

HTML      ASP.NET  
. Delphi 2005      HTML      ,  
ASP.NET      .      ASP.NET  
.

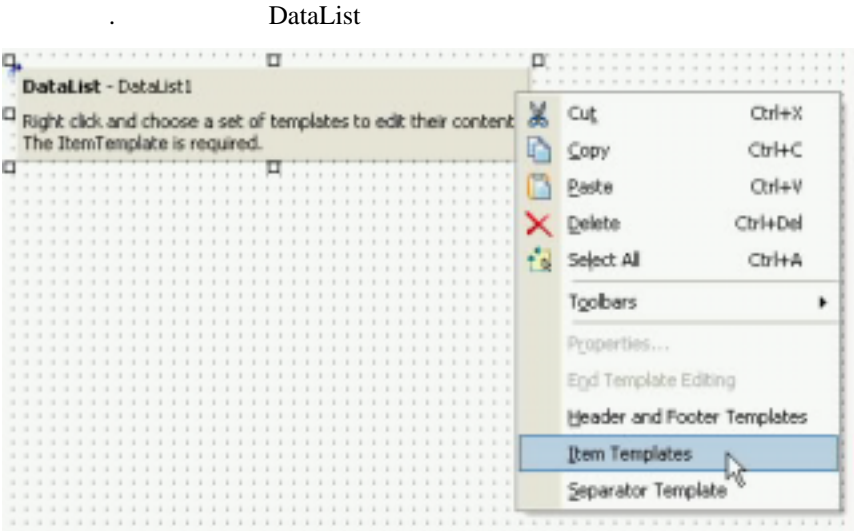




Delphi 2005 Web Form

. DataList , (footer),

. Delphi 2005 Web Form



가

.

Item

DataList .



End

Template Editing .

Delphi HTML Delphi 2005  
cascading style sheets, CSS  
XHTML .

**Tag**

Tag Delphi 2005 . Tag Web Form Designer  
 , 가 가 가  
가 HTML . Tag HTML  
가 Delphi 2005 HTML .  
Tag <td> . Code  
Insight .





## ASP.NET Project Manager 가

ASP.NET

.aspx HTML <IMG>( )  
, .jpg .gif <IMG>  
src ..

, ASP.NET

Project Manager

. Project Manager ASP.NET

New | Folder . 가 ASP.NET

가 .

Add .

, , JavaScript

가 . 가

Project Manager

ASP.NET

Delphi

2005 가 .

DB

DB ASP.NET  
.NET Web , DB Web  
Forms 가  
.

FCL DB ASP.NET  
. DB ,  
/  
.

DB

Delphi 2005 DB 가  
Delphi 2005 DB Web DBWebAggregateControl,  
DBWebNavigatorExtender, DBWebSound, DBWebVideo ..

DBWebAggregateControl DBWebTextBox Sum, Min, Count  
.

DBWebSound DBWebVideo ASP.NET  
가 . blob(binary large object)  
. , 가 URL  
.

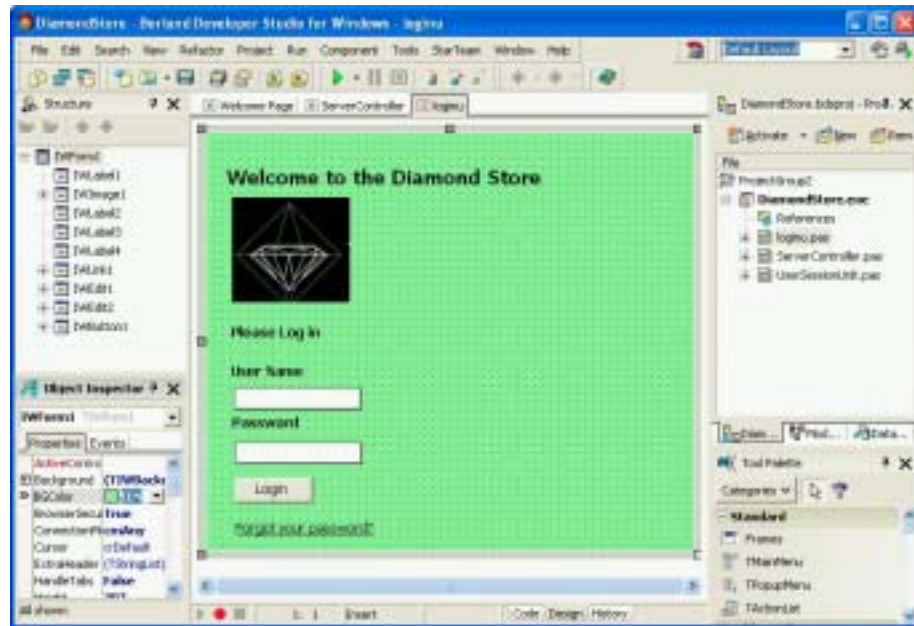
DBWebNavigationExtender , 가  
ADO.NET BDP .  
DBWebNavigationExtender Web Form Button  
DBDataSource, TableName, DataSourceAction 가 .

DataSourceAction DBDataSource .

**DB**

Delphi 2005 DB 가 . DBWebImage  
DBWebDataSource . DBWebImage DBWebSound  
DBWebVideo . DBWebImage  
가 bolb URL  
DBWebImage  
가 bolb .  
 , DBWebDataSource 가 . , - (master-  
detail relationships) ,  
DBWebDataSource .  
DBWebDataSource XML DB  
가 . ,  
XML . , XML ,  
DBWebDataSource XML  
XML .  
IntraWeb  
IntraWeb RAD  
가 ASP.NET  
IntraWeb .

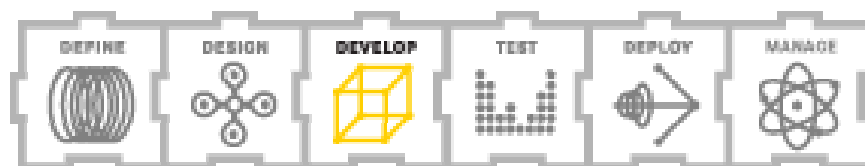
ASP.NET  
가 . IntraWeb  
IntraWeb  
TIWServerController  
IntraWeb  
가  
ASP.NET  
IntraWeb  
가  
IntraWeb  
“Delphi” . VCL VCL.NET  
Tool Palette Delphi 가  
가 IntraWeb  
HTML, WAP (wireless access protocol), HTML 3.2  
IntraWeb 가 가 . IntraWeb  
ISAPI (Internet Server application programming interface)  
HTTP  
IIS (Internet Information Server) IIS IntraWeb  
가 , 가 IntraWeb  
가  
HTTP 가  
Delphi 2005 IntraWeb . ASP.NET  
.aspx . , IntraWeb  
가 HTTP HTML



Delphi 2005    Win32 Delphi    IntraWeb    Delphi for .NET    .

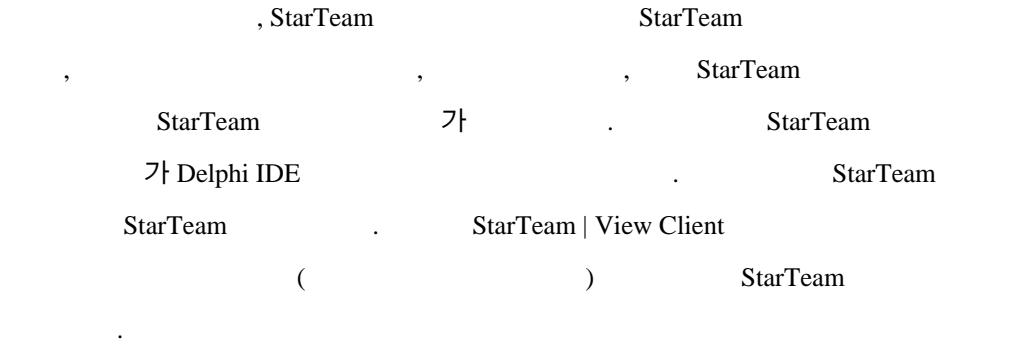
# Application Lifecycle Management

Borland®  
Delphi™ 2005

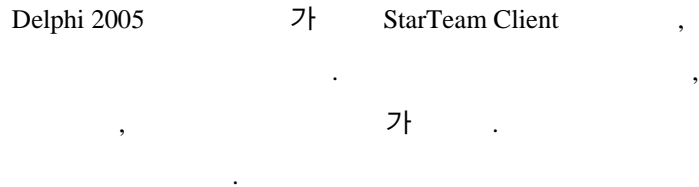


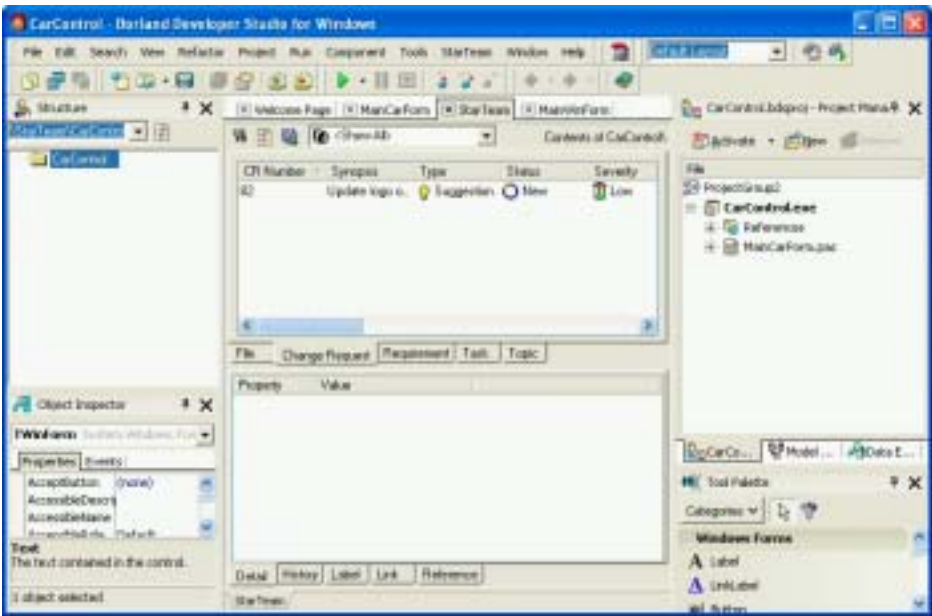
## Integrated Application Lifecycle Management

Delphi 2005 IDE, StarTeam, Janeva, UML, ECO, Profiling, Optimizeit, ALM(Application Lifecycle Management), Unit Testing, Project Manager, context menu, sub menu, [ ]

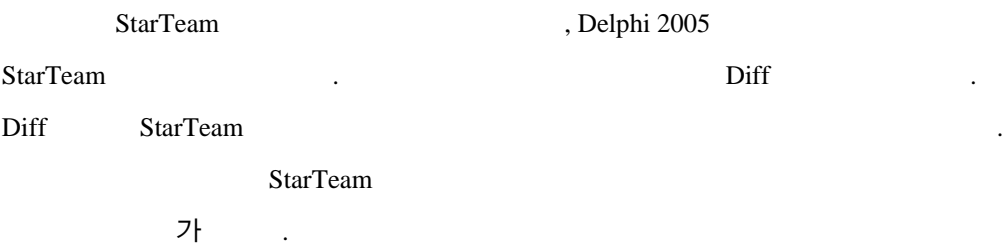


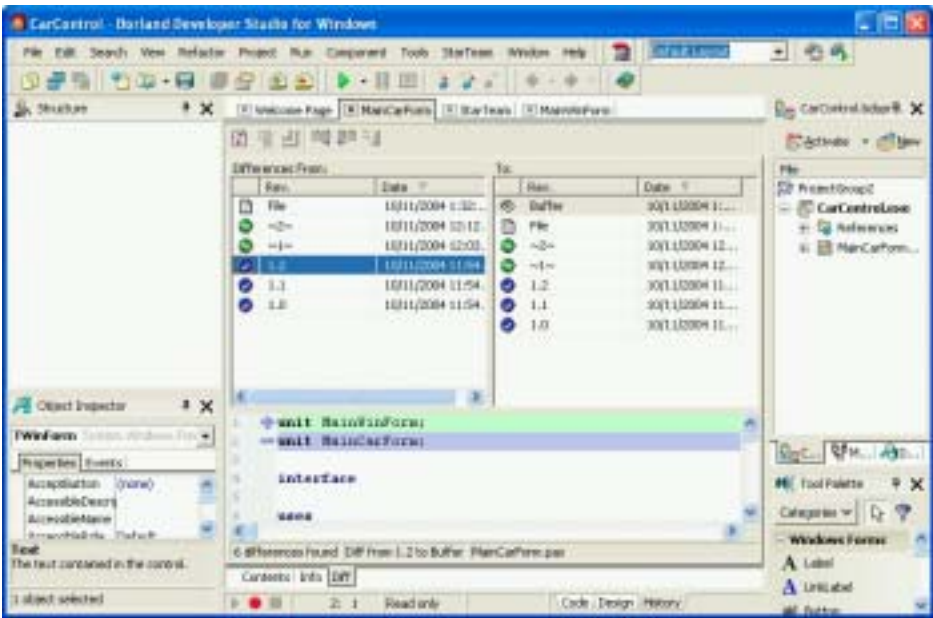






When you are working with a StarTeam managed project, the Delphi 2005 History Manager makes use of the StarTeam repository. For example, the following figure shows the Diff pane of the History Manager. Here the Diff pane displays source code versions based on changes that have been checked into the StarTeam repository. With the StarTeam enabled History Manager, even changes to source code file names are tracked, as shown in the following figure.





## Unit Testing

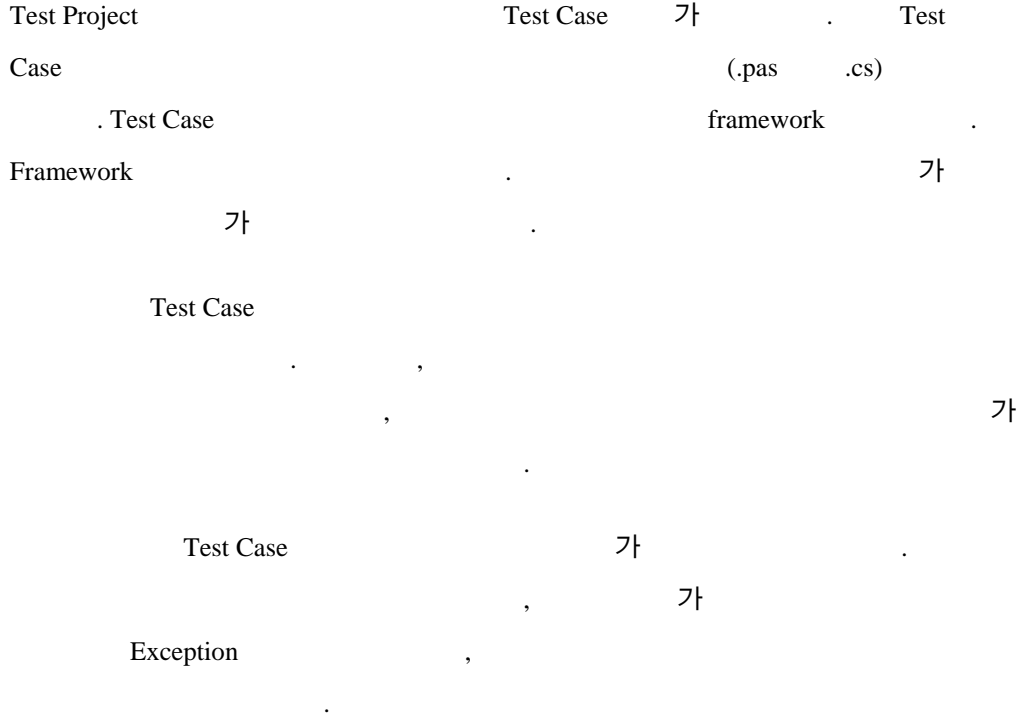
Unit Testing , Function, Procedure

. Unit testing Extreme Programming

Unit testing

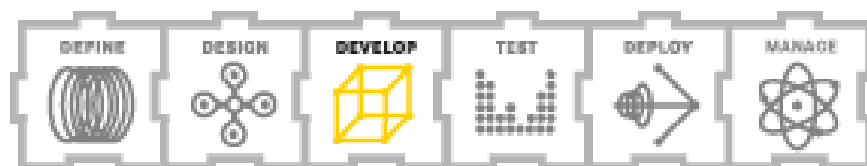
Delphi 2005 includes unit testing support for all three of its personalities: Delphi Win32, Delphi for the .NET Framework, and C# for .NET. You establish a unit testing by first creating a test project. The Test Project Wizard asks you to select which of Delphi 2005's personalities was used to create the code you want to test.

Delphi 2005 Unit testing 가 . Delphi Win32, Delphi  
for .Net Frame work C# .Net . Unit  
Testing . Delphi 2005 Test Project



# Enterprise Core Objects (ECO) II

Borland®  
Delphi™ 2005



Borland	Borland's Enterprise Core Objects	ECO( )	Borland
.NET Framework	. ECO	.Net framework	Borland
diagram	.Net Framework	UML diagram	

MDA .

ECO UML

UML 가

가 UML

diagram 가

ECO UML 가

UML

가

가 ,

가 .

In this respect, ECO is really "Rapid MDA." ECO dramatically reduces the amount of code that you need to write manually, reducing your time to deployment and improving the overall maintainability of your applications. More importantly, the applications you build with ECO are based on the enterprise-aware architecture of your UML designs.

ECO                    ‘                    MDA’                    . ECO

ECO

UML

ECO

UML class diagram

Building, ResidentialBuilding, Person.

3

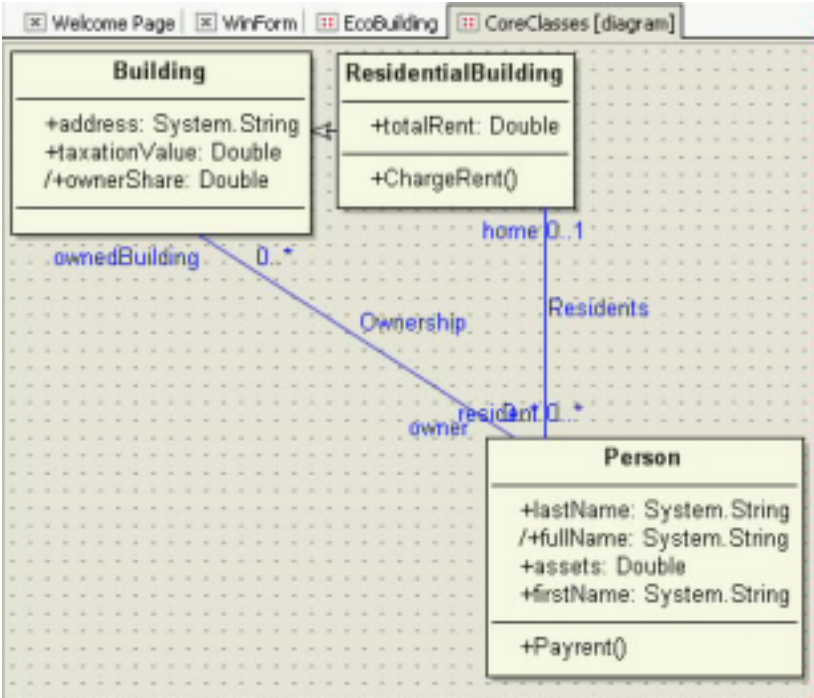
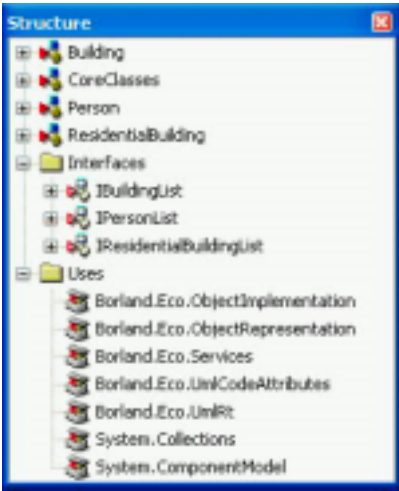


diagram runtime

(Structure Pane)

ECO

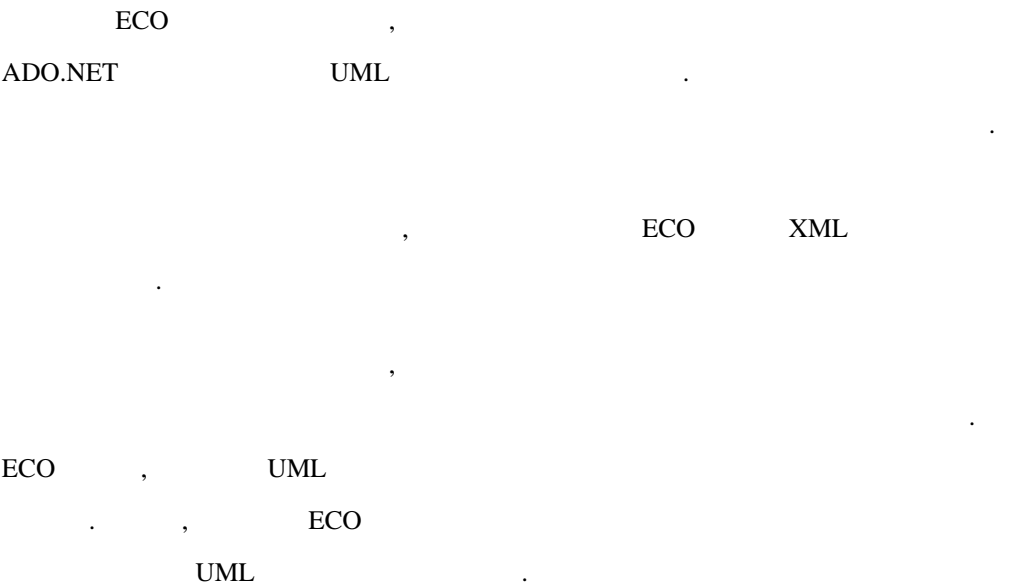


Because the model is the central focus of your development efforts, there is an inherent synchronization between your UML model and the application created with it. In other environments where UML simply guides development, the model often quickly becomes out-of-date.

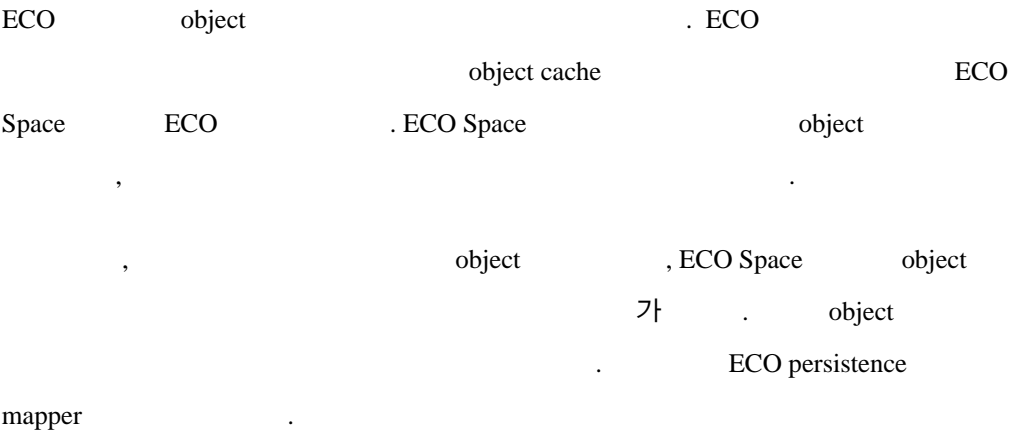
가 , UML  
UML  
가  
ECO , UML  
ECO ,  
가  
GUI ECO



In most ECO applications, the business objects defined by your UML models map to an underlying ADO.NET relational database structure. This database of your choosing is used to persist and restore your business objects, as needed. You can even map your ECO objects to XML files, though most developers prefer the security and transaction support provided by a remote database server.



### ECO Space Persistence



ECO OCL

UML , ECO OCL ( Object Constraint Language ) UML  
OMG(an Object Management Group )  
object OCL  
UML , ECO OCL

ECO II

Delphi 2005 ECO II ECO . ECO  
II .NET  
. ECO II

A Highly Scalable Enterprise Object Cache

ECO II  
OO Space 2 가 가 ,  
가 ECO Space . ECO  
Space 가 가 ASP.NET  
ECO Space 가 , ECO persistence mapper  
가 ECO Space  
ECO Space 가 ECO Space  
ECO persistence mapper thread 가  
, ECO Space 가 ECO Space  
persistent mapper .NET  
ECO

ECO Space    object persistence    가    . Undo/Redo, versioning,    가    .

## ECO II    MDA

ECO object .

DbDataSource .

, ECO Space state maintenance

. ,ECO ASP.NET

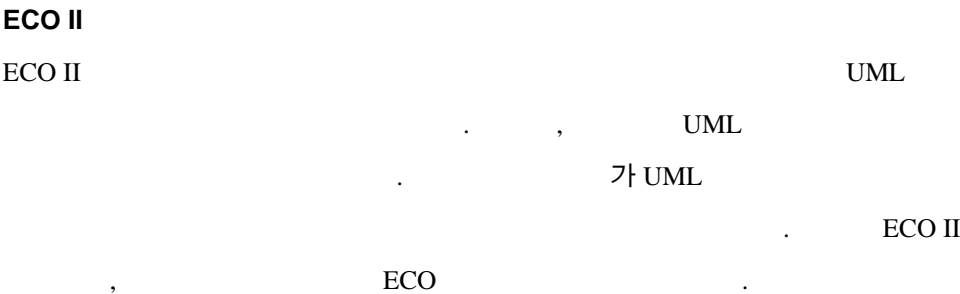
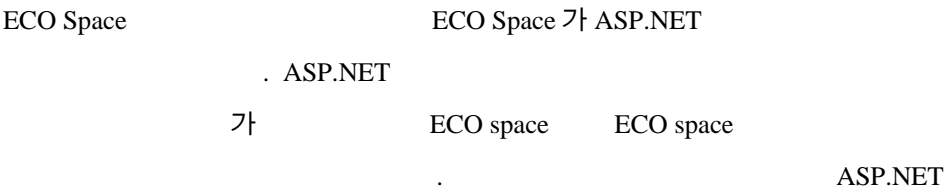
EcoSpaceProvider 가 . ECO Space 가

가 .

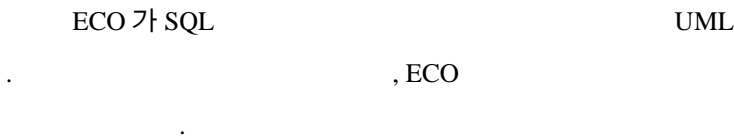
/ ECO Space

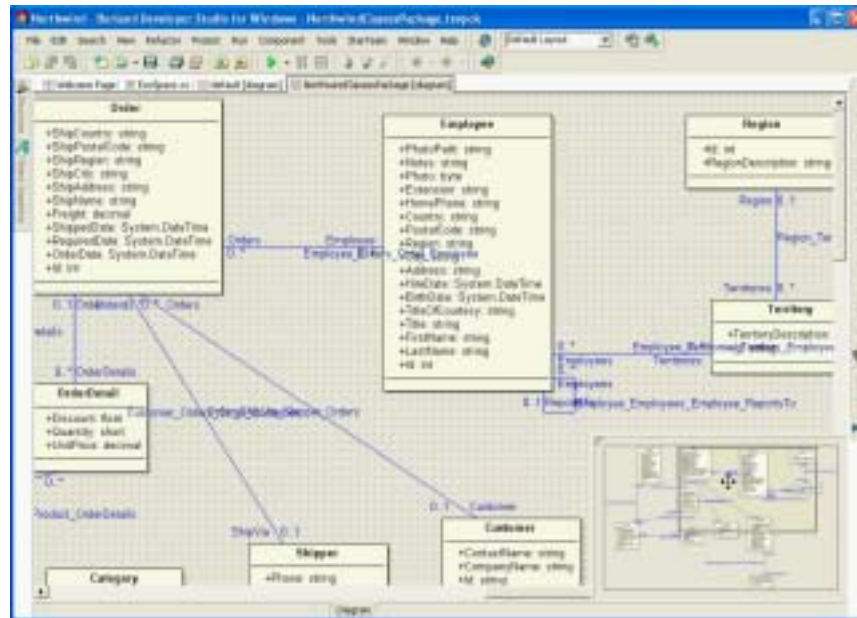
가 . 가 가 . Maintaining state 가

가 ASP.NET object



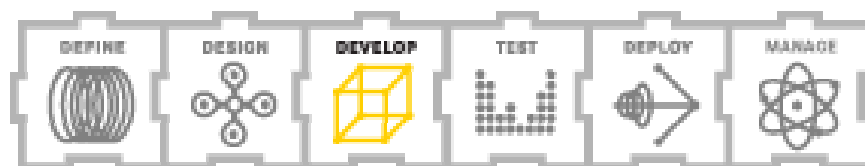
The following figure shows a UML diagram that ECO created from the sample SQL Server database Northwind. In addition to the various classes and their attributes, ECO infers the relationships between the classes based on field names and indexes.





# Partner Tools

Borland®  
Delphi™ 2005



3<sup>rd</sup>

Delphi 2005 ,  
Application Lifecycle Management  
. Delphi 2005 가  
. Delphi 2005  
2005 .  
가  
 , .

## Borland InterBase 7.5

InterBase 7.5 Developer Edition enables you to develop and test your applications running against InterBase , an enterprise-quality remote database management system (RDBMS). Borland InterBase is a small-footprint database server that minimizes maintenance while providing support for mission-critical applications. For more information on InterBase 7.5, please visit: <http://www.borland.com/interbase/>

InterBase 7.5 Developer Edition RDBMS( Remote Database  
Management System ) InterBase 가  
가 . Borland InterBase

. InterBase 7.5

, <http://www.borland.com/interbase/> 가 .

## Borland Janeva

Janeva

J2EE / CORBA

. <http://www.borland.com/janeva/> Janeva

가 ..

\* Janeva

. Borland

## Microsoft .NET Framework Borland Optimizeit™ Profiler

Identify and remove performance bottlenecks in your .NET managed code through CPU and memory usage analysis with Borland Optimizeit Profiler for the Microsoft .NET Framework. For more information about Borland Optimizeit for the Microsoft .NET Framework, please visit: [http://www.borland.com/opt\\_profiler/](http://www.borland.com/opt_profiler/)

Microsoft .NET Framework Borland Optimizeit Profiler CPU

.NET

. Borland

Optimizeit for the Microsoft .NET Framework ,

[http://www.borland.com/opt\\_profiler/](http://www.borland.com/opt_profiler/) 가 ..

## Borland StarTeam 6.0 Standard Edition

StarTeam provides you with a rich and automated system for managing the assets and application lifecycle tasks from within a single repository. For more information about StarTeam 6.0 Standard Edition, please visit: <http://www.borland.com/starteam/>



StarTeam

. StarTeam 6.0 Standard Edition

<http://www.borland.com/starteam/> 가 .

## Borland Delphi 2005 Component One Studio Enterprise

Component One Studio Enterprise for Borland Delphi 2005 is a special edition of Studio Enterprise that includes a development license for eleven .NET (Windows Forms) and six ASP.NET (Web Forms) controls. For more information about Component One Enterprise Studio, please visit: <http://www.componentone.com/>

Borland Delphi 2005 Component One Studio Enterprise 11 .NET ( Windows Form) 6 ASP.NET(Web Form)

. Component One Enterprise Studio

, <http://www.componentone.com/> 가 ..

## Crystal Reports Borland Edition

Crystal Reports Borland Edition is a .NET version of the world's leading reporting tool for use in your C# and Delphi for .NET applications. For more information about Crystal Reports Borland Edition, please visit:

<http://www.businessobjects.com/products/reporting/crystalreports/net/default.asp>

Crystal Reports Borland Edition .NET C# Delphi

.NET . Crystal Reports Borland Edition

,  
<http://www.businessobjects.com/products/reporting/crystalreports/net/default.asp>

가

## glyFX Borland Special Edition

glyFX Borland Special Edition is a collection of 95 high-quality images for use in toolbars, buttons, or any control that supports bitmap files. For more information on glyFX Borland Special Edition, please visit: <http://www.glyfx.com>

glyFX Borland Special Edition , ,  
 . glyFX Borland Special Edition  
 , <http://www.glyfx.com> 가 .

## IBM DB2 Universal Developers Edition

IBM DB2 Universal Developers Edition DB2 , DB2  
 , ,  
 .

## InstallShield Express for Borland Delphi

InstallShield Express for Borland Delphi provides you with an easy-to-use graphical interface for building custom installers for your Windows software. For more information on InstallShield Express for Borland Delphi, please visit: <http://www.installshield.com/Borland>

Borland Delphi InstallShield Express Custom Installer  
 .  
<http://www.installshield.com/Borland> 가 .

## Internet Direct (Indy)

Internet Direct (Indy) is an open-source Internet component suite comprised of popular Internet protocols written in Delphi and based on blocking sockets. For more information about Internet Direct, please visit: <http://www.atozed.com/indy>

Internet Direct (Indy) Delphi

<http://www.atozed.com/indy> 가 .

## IntraWeb

IntraWeb is a complete RAD solution for building Web applications, dynamic Web sites that go well beyond the capabilities of regular ASP.NET Web applications and ISAPI Web server extensions. For more information on IntraWeb, please visit:

<http://www.atozed.com/intraWeb/>

IntraWeb Regular ASP.NET ISAPI  
RAD  
. IntraWeb <http://www.atozed.com/intraWeb/>  
가 .

---

## Microsoft SQL Server 2000 Desktop Engine (MSDE 2000)

MS SQL Server 2000  
SQL 가 SQL 2000 Server .

## Microsoft SQL Server 2000 Developer Edition

MS SQL Server Delveloper Edition SQL 2000 Server .

## Rave Reports Borland Edition

Rave Reports Borland Edition is a powerful and scalable suite of VCL and VCL for .NET reporting components for creating sophisticated Delphi reports. For more information about Rave Reports Borland Edition, please visit: <http://www.nevrona.com/rave/>

Rave Reports Borland Edition                      Delphi  
가      VCL      VCL.Net                      . Rave Reports Borland  
Edition                      <http://www.nevrona.com/rave/>                      가      .

## Wise Owl Demeanor .NET Borland Edition

Wise Owl Demeanor for .NET Borland Edition is a .NET obfuscator, a tool that helps prevent others from reverse-engineering your managed code applications and assemblies. For more information about Wise Owl Demeanor for .NET Borland Edition, please visit:  
<http://www.wiseowl.com/>

Wise Owl Demeanor for .Net Borland Edition  
가                      .Net obfuscator      .  
<http://www.wiseowl.com/>                      가

Borland  
Developer Network      가      . <http://bdn.borland.com/>.  
,  
Borland      online, Repository      Code Central      . Code  
Central url : <http://cc.borland.com/ccweb.exe/>

## Summary

20 Delphi 2005 ,  
가  
. Application lifecycle  
Delphi 2005 Windows .

## Borland Software Corporation

1983 Borland Software Corporation(NASDAQ:BORL) SDO(software delivery optimization) OS . Borland  
가 , ,  
.  
URL .. <http://www.borland.com>.

## 가

Carey Jensen , Jensen Data Systems, Inc  
.(<http://www.jensendatasystems.com>). 19 ,  
Borland Developer Network ..  
 , . Cary Texas, Rice  
University . E-mail :  
[cjensen@jensendatasystems.com](mailto:cjensen@jensendatasystems.com).

**Made in Borland®** Copyright © 2004 Jensen Data Systems, Inc. All rights reserved. All Borland brand and product names are trademarks or registered trademarks of Borland Software Corporation in the United States and other countries. Microsoft, Windows, and other Microsoft product names are trademarks or registered trademarks of Microsoft Corporation in the U.S. and other countries. All other marks are the property of their respective owners. Corporate Headquarters: 100 Enterprise Way, Scotts Valley, CA 95066-3249 • 831-431-1000 • [www.borland.com](http://www.borland.com) • Offices in: Australia, Brazil, Canada, China, Czech Republic, Finland, France, Germany, Hong Kong, Hungary, India, Ireland, Italy, Japan, Korea, Mexico, the Netherlands, New Zealand, Russia, Singapore, Spain, Sweden, Taiwan, the United Kingdom, and the United States. •